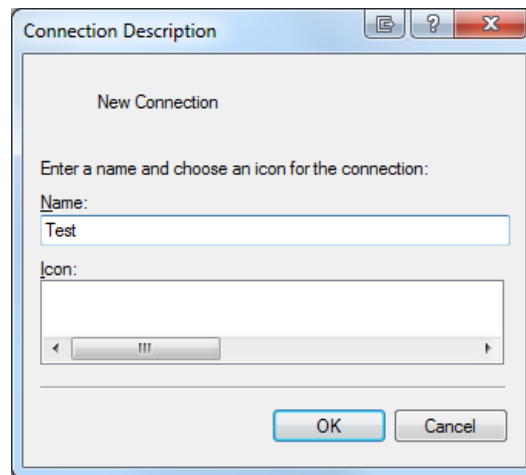


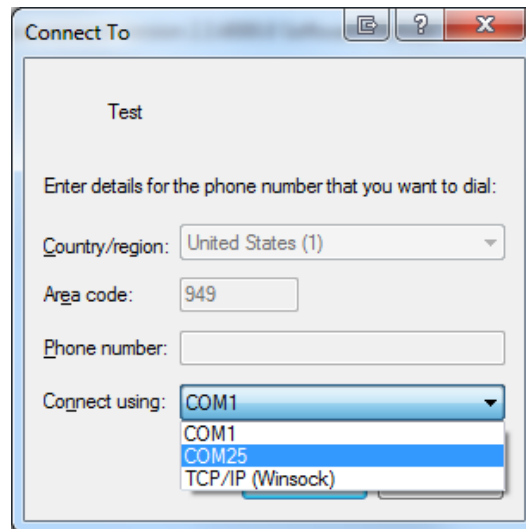
HyperTerminal Setup Guide

How to Connect

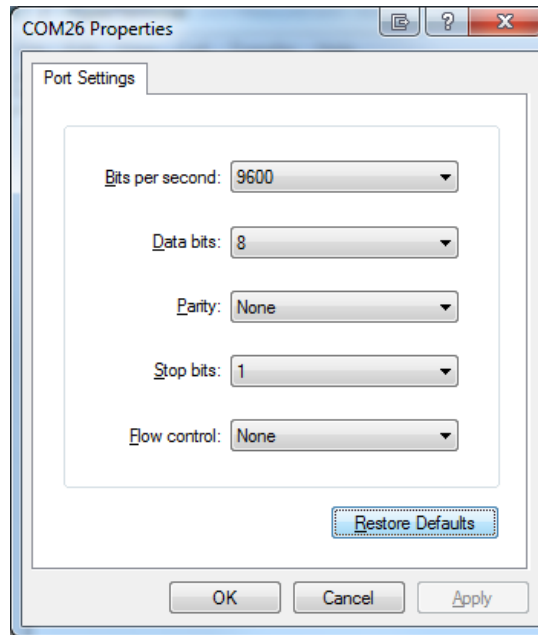
1. Connect USB Device or Instrument to computer via USB port.
2. Open HyperTerminal.
3. Enter any name for the Connection Description and press 'OK'.



4. Select the COM port the device is connected to and press 'OK'.



5. Click 'Restore Defaults' and press 'OK'.



6. Output should be displayed in window. See Figures 1-4 for different models connected to HyperTerminal.

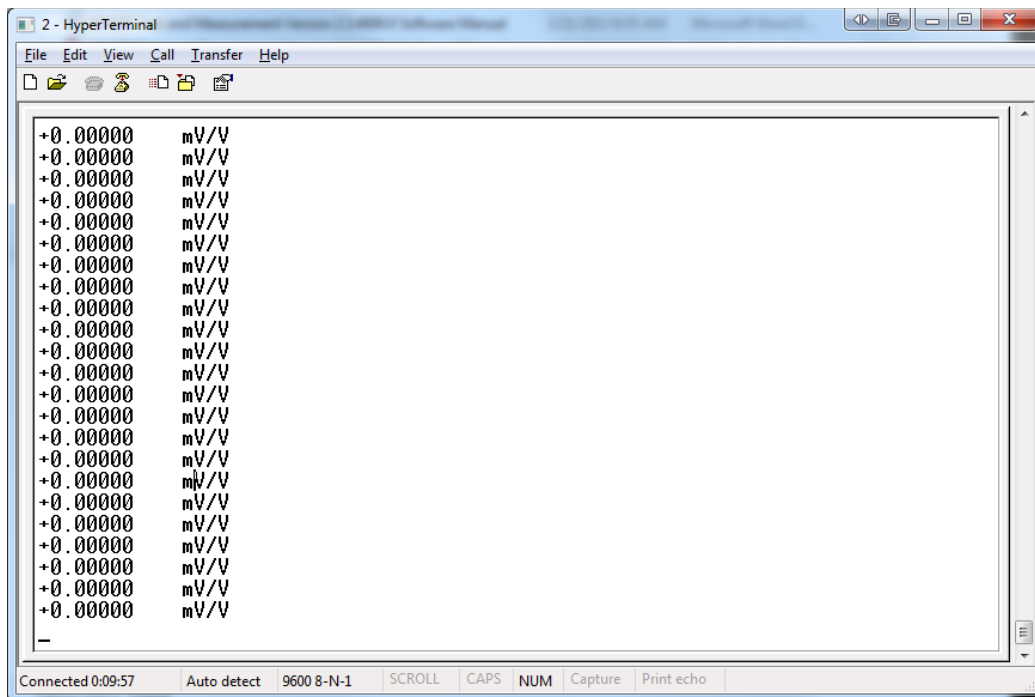


Figure 1: USB210, USB220, USB320

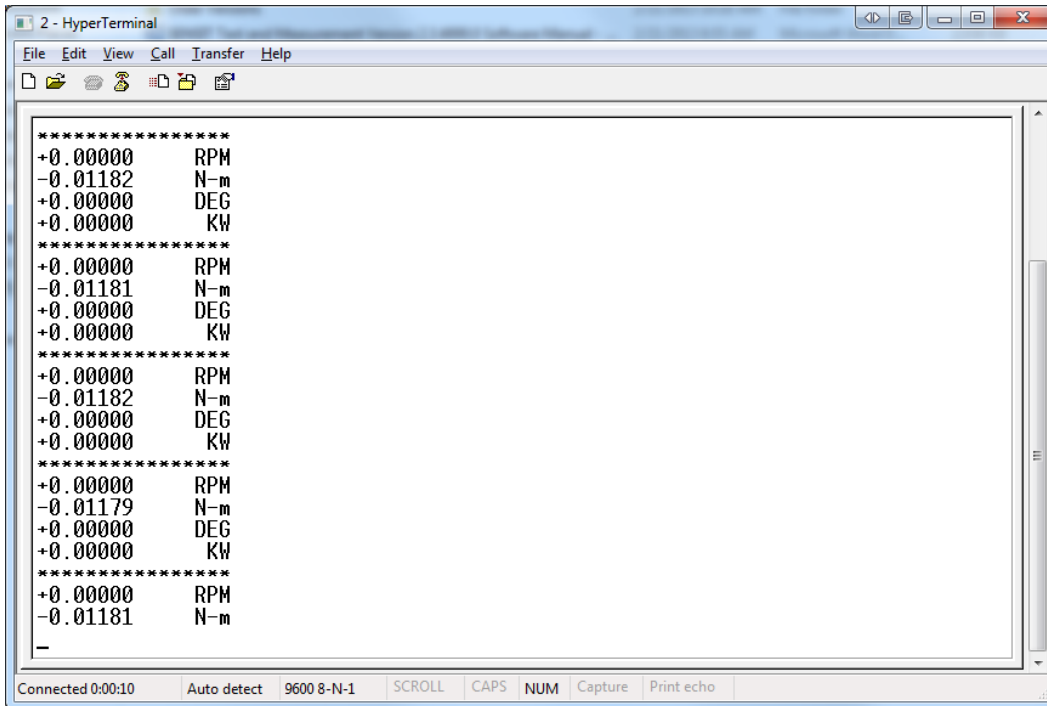


Figure 2: USB410

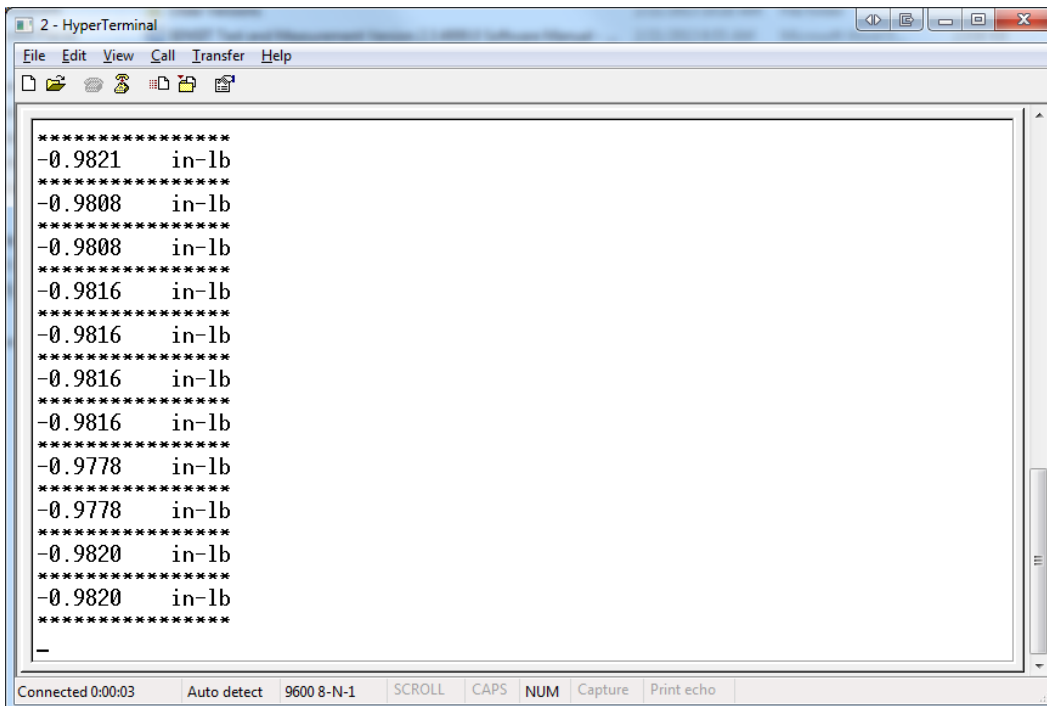


Figure 3: USB520

Note: ASCII output for USB520 looks like Figure 2 when degrees are enabled.

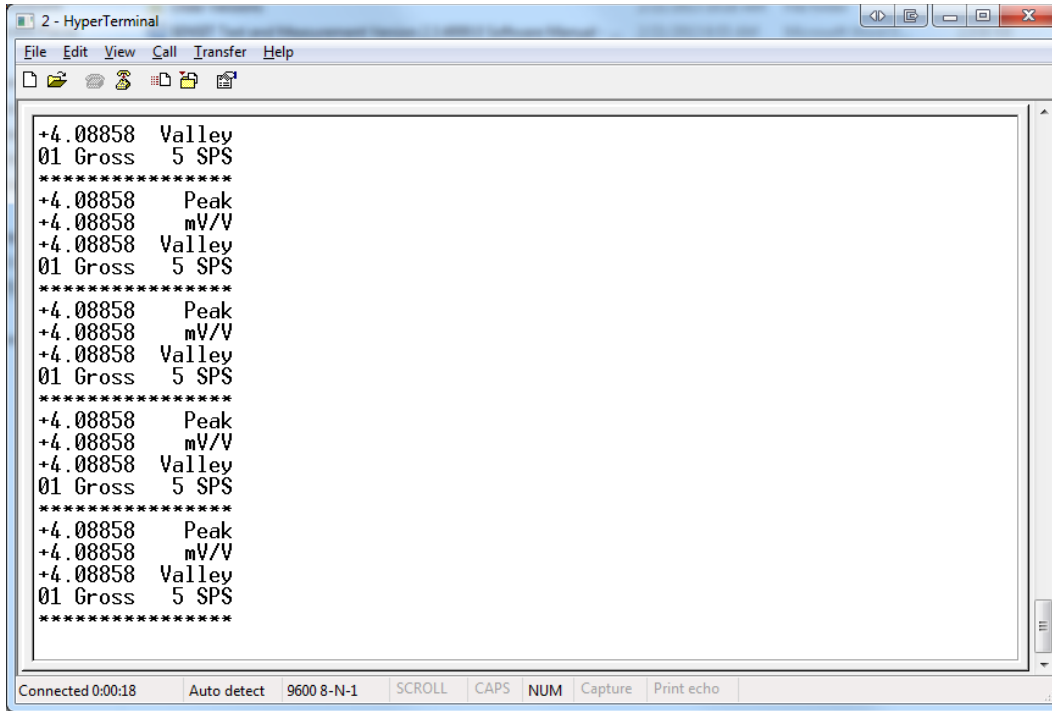


Figure 4: IHH500, IPM650