

FUTEK MODEL TDD400

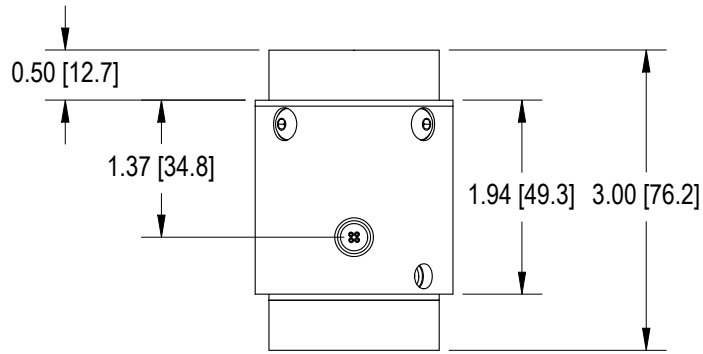
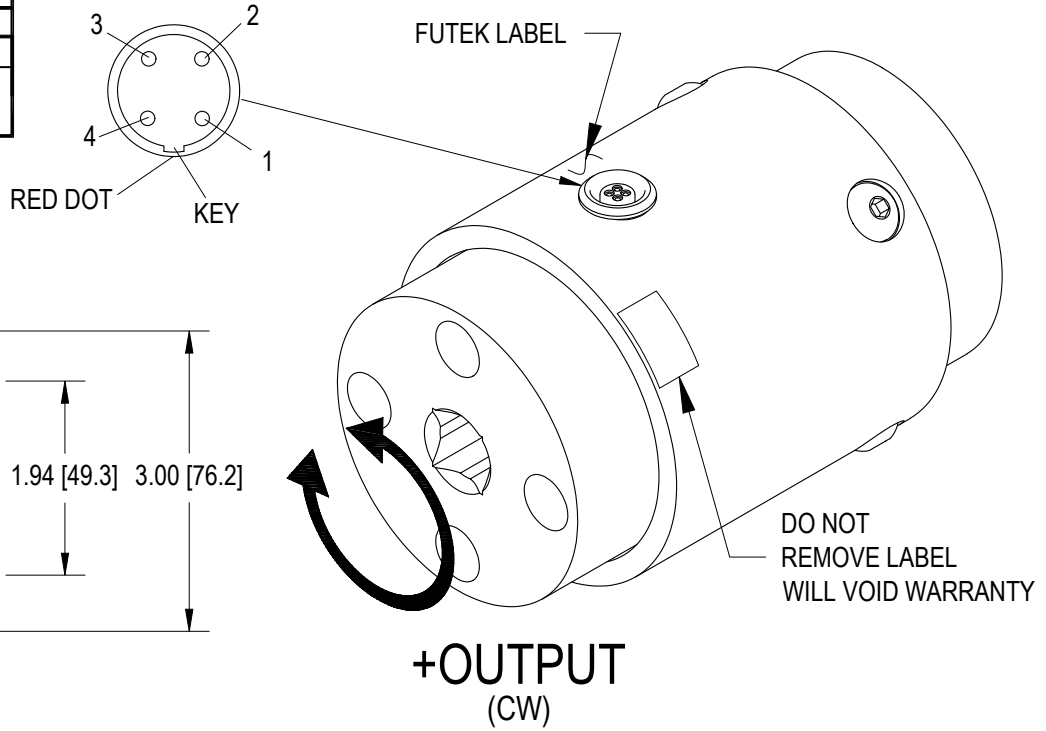
Drawing Number: F11135

INCH [mm] | R.O.= Rated Output

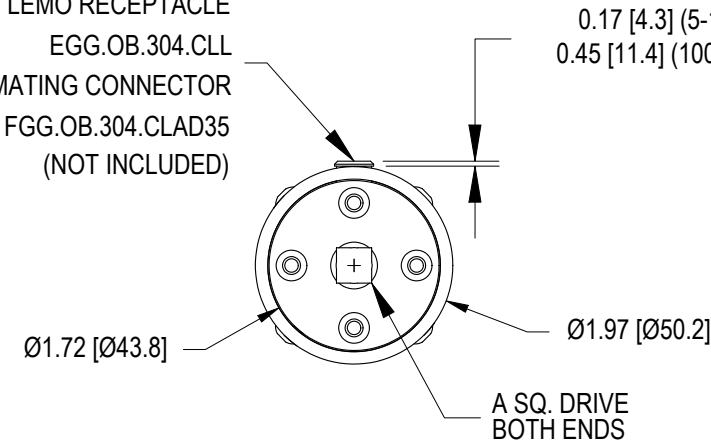
WIRING CODE (CC4)

+Excitation	-Excitation	+Signal	-Signal
1 Red	4 Black	2 Green	3 White

SQUARE DRIVE TO SQUARE DRIVE REACTION TORQUE SENSOR (Previously T5103)



LEMO RECEPTACLE
EGG.OB.304.CLL
MATING CONNECTOR
FGG.OB.304.CLAD35
(NOT INCLUDED)



STK#	CAPACITY		A	TORSIONAL STIFFNESS in-oz/rad
	in-oz	Nm		
FSH00320	5*	0.04	1/4"	325
FSH00321	10*	0.08		700
FSH00322	20*	0.15		1600
FSH00323	50*	0.37		3500
FSH00324	100*	0.75		7300
FSH00325	160*	1.2		11000
FSH00326	400*	3.0		30000
FSH00327	1000	7.5	3/8"	71000
FSH00328	100 in-lb	12		77000 in-lb/rad
FSH00329	200 in-lb	24		95000 in-lb/rad
FSH00330	500 in-lb	60		199000 in-lb/rad

* WITH OVERLOAD PROTECTION
FOR HIGHER CAPACITIES REFER TO MODELS TFF600-750
AND TDF600-675

SPECIFICATIONS:

RATED OUTPUT	1.5 mV/V nom. (5 in-oz) 2 mV/V nom. (10 in-oz to 500 in-lb)
SAFE OVERLOAD	150% of R.O.
ZERO BALANCE	±1% of R.O.
EXCITATION (VDC OR VAC)	18 MAX
BRIDGE RESISTANCE	350 Ω nom. (5 to 1000 in-oz) 700 Ω nom. (100 to 500 in-lb)
NONLINEARITY	±0.2% of R.O.
HYSTERESIS	±0.2% of R.O.
NONREPEATABILITY	±0.05% of R.O.
TEMP. SHIFT ZERO	±0.002% of R.O./°F [0.0036% of R.O./°C]
TEMP. SHIFT SPAN	±0.002% of LOAD/°F [0.0036% of LOAD/°C]
COMPENSATED TEMP.	60 to 160°F [15 to 72°C]
OPERATING TEMP.	-60 to 200°F [-50 to 93°C]
WEIGHT	14 oz [397 g]
MATERIAL	ALUMINUM
CONNECTOR:	4 Pin Lemo Receptacle (EGG.OB.304.CLL)
ACCESSORIES AND RELATED INSTRUMENTS AVAILABLE	
CALIBRATION (STD)	5 pt. CW; 60.4KΩ (5 to 1000 in-oz) 100KΩ (100 to 500 in-lb) SHUNT CAL. VALUE
CALIBRATION (OPT)	5pt. CCW
CALIBRATION TEST EXCITATION	10 VDC