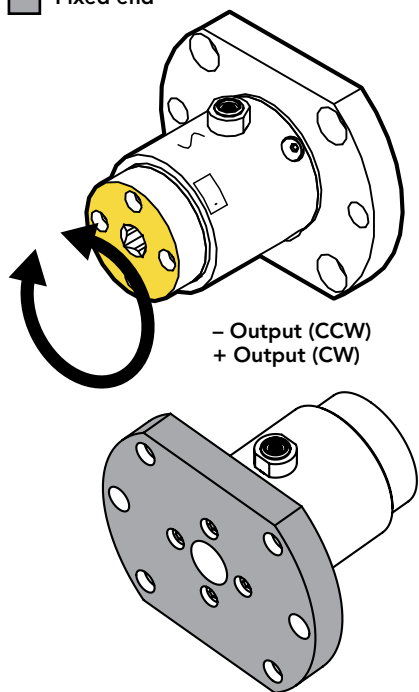




## FEATURES

- Easily integrates into OEM applications
- Designed for Torque auditing
- Aluminum construction
- Built-in overload protection on lower ranges
- Strain gauge based

- Active end
- Fixed end



## SPECIFICATIONS

### PERFORMANCE

Nonlinearity	±0.2% of RO
Hysteresis	±0.2% of RO
Nonrepeatability	±0.05% of RO

### ELECTRICAL

Rated Output (RO)	1 mV/V nom (5 in-oz) 2 mV/V nom (10 in-oz to 500 in-lb)
Excitation (VDC or VAC)	18 max
Bridge Resistance	350 Ohm nom (5 to 1000 in-oz) 700 Ohm nom (100 to 500 in-lb)
Connection	4 Pin LEMO® Receptacle (EGG.0B.304.CLL)
Wiring Code	CC4

### MECHANICAL

Weight (approximate)	14 oz [397 g]
Safe Overload	300% of RO (5 to 400 in-oz) 150% of RO (1000 in-oz to 500 in-lb)
Material	Aluminum
IP Rating	IP40

### TEMPERATURE

Operating Temperature	-60 to 200°F (-50 to 93°C)
Compensated Temperature	60 to 160°F (15 to 72°C)
Temperature Shift Zero	±0.002% of RO/°F (0.0036% of RO/°C)
Temperature Shift Span	±0.002% of Load/°F (0.0036% of Load/°C)

### CALIBRATION

Calibration Test Excitation	10 VDC
Calibration (standard)	5-pt CW
Calibration (available)	5-pt CW & CCW
Shunt Calibration Value	60.4 kOhm (10 to 1000 in-oz) 100 kOhm (5 in-oz, 100 to 500 in-lb)

## Sensor Solution Source

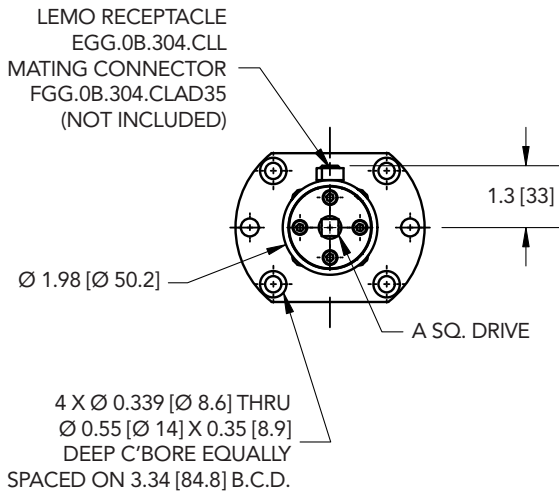
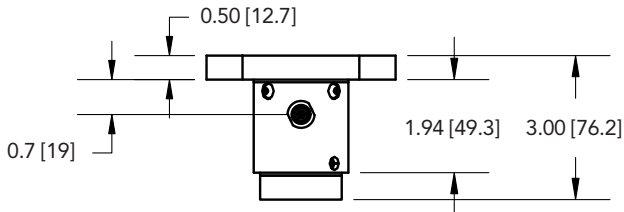
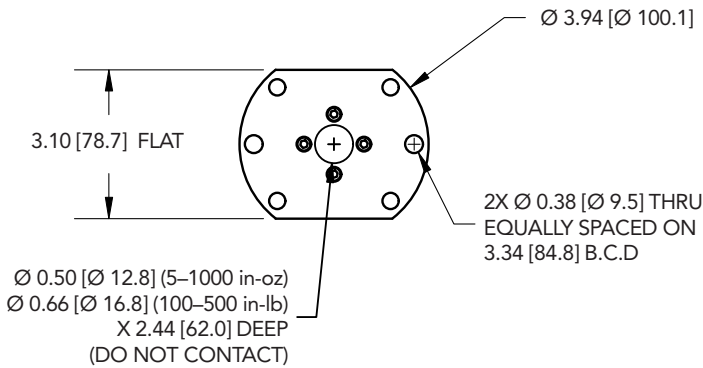
Load · Torque · Pressure · Multi-Axis · Calibration · Instruments · Software

[www.futek.com](http://www.futek.com)



U.S. Manufacturer

**DIMENSIONS** inches [mm]



**CAPACITIES**

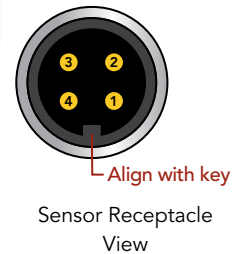
ITEM #	in-oz	Nm	A	Torsional Stiffness in-oz/rad
FSH02790	5 <sup>1</sup>	0.04	1/4"	325
FSH02791	10 <sup>1</sup>	0.07		650
FSH02793	50 <sup>1</sup>	0.35		3500
FSH02795	160 <sup>1</sup>	1.1		11000
FSH02796	400 <sup>1</sup>	2.8		30000
FSH02797	1000	7.0	3/8"	71000
FSH02798	100 in-lb	11		77000 in-lb/rad
FSH02799	200 in-lb	22		95000 in-lb/rad
FSH02800	500 in-lb	56		199000 in-lb/rad

<sup>1</sup> With overload protection

**Note:** For higher capacities, refer to models TFF600–750 and TDF600–675

**LEMO 4-PIN (CC4)**

PIN	COLOR	DESCRIPTION
1	Red	+ Excitation
2	Green	+ Signal
3	White	– Signal
4	Black	– Excitation



Drawing Number: FI1136-H

FUTEK reserves the right to modify its design and specifications without notice.  
Please visit <http://www.futek.com/salesterms> for complete terms and conditions.

10 Thomas, Irvine, CA 92618 USA

Tel: (949) 465-0900  
Fax: (949) 465-0905

[www.futek.com](http://www.futek.com)



U.S. Manufacturer