

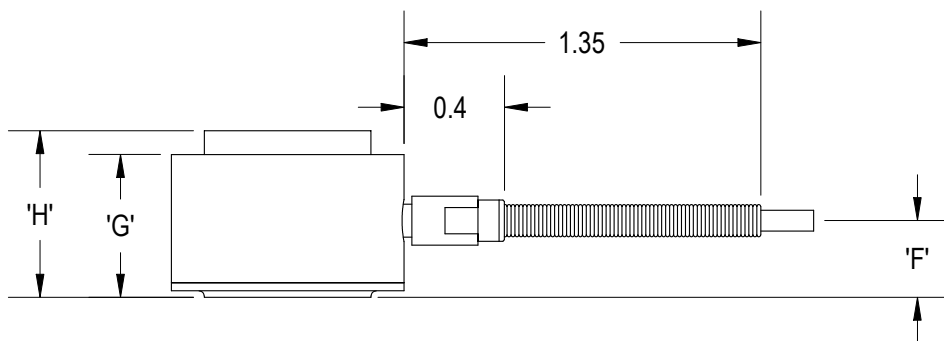
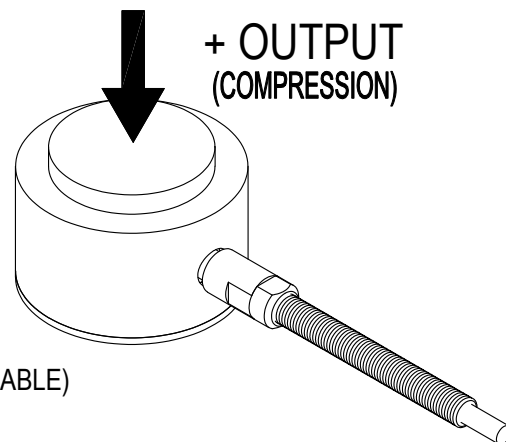
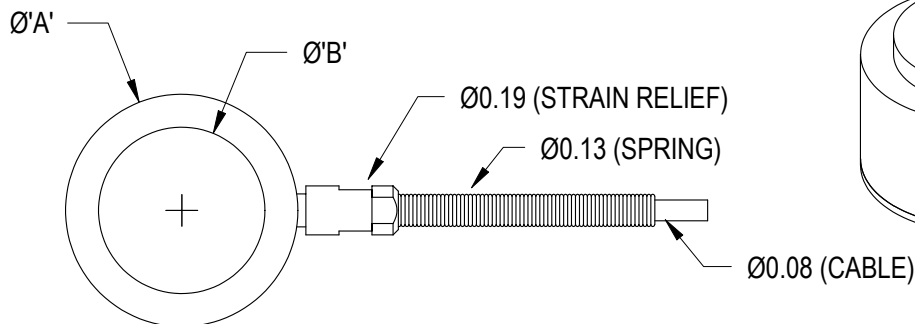
FUTEK MODEL L1618

MINIATURE COMPRESSION LOAD BUTTON

REPLACEMENT FOR SENSOTEC MODEL LFH-71

INCH (mm) | R.O.= Rated Output

WIRING CODE (WC 1)			
+Excitation	-Excitation	+Signal	-Signal
RED	BLACK	GREEN	WHITE



CAPACITY (lb)	ØA	ØB	F	G	H
4000	0.63	0.49	0.13	0.23	0.60
5000	0.63	0.53	0.13	0.23	0.60
7500	0.88	0.63	0.29	0.54	0.63
10000	0.88	0.63	0.29	0.54	0.63

SPECIFICATIONS:

RATED OUTPUT	2 mV/V nom.
SAFE OVERLOAD	150% of R.O.
ZERO BALANCE	±3% of R.O.
EXCITATION (VDC OR VAC)	18 MAX
BRIDGE RESISTANCE	700 Ω nom
NONLINEARITY	±1% of R.O.
HYSTERESIS	±1% of R.O.
NONREPEATABILITY	±0.5% of R.O.
TEMP. SHIFT ZERO	±0.01% of R.O./°F
TEMP. SHIFT SPAN	±0.01% of LOAD/°F
COMPENSATED TEMP.	60 to 160°F
OPERATING TEMP.	-40 to 200°F
MATERIAL	STAINLESS STEEL
CABLE: #29 AWG, 4 Conductor Braided Shield Teflon Cable, 10 ft Long	

NOTES:

- 1) 4000 and 5000 lb use just a spring as strain relief

MATERIAL:

—

HEAT TREATMENT - FINISH:

—

REVISIONS: (Refer to dwg # revision sheet)

▲ 1-27-03

OUTLINE DRAWING (4-10K lb)

STANDARD NOTES: (Unless Otherwise Specified)

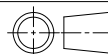
- ALL DIMENSIONS ARE IN INCHES
- DRAWING INTERPRETATION DIMS. PER ASME-Y14.5M
- REMOVE BURRS AND BREAK SHARP EDGES .005 - .015
- THREADS PER HANDBOOK H-28
- DIMENSIONS ARE SHOWN AFTER PLATING

ANGLE:
±1/2°

CHAMFER:
±5°

TOLERANCE:
.XX ±.01
.XXX ±.005

3rd ANGLE PROJ.



This drawing is submitted solely for the information and exclusive use of the original addressee. It is not to be divulged in whole or in part, by any firm or individual without written permission from:

FUTEK
ADVANCED SENSOR TECHNOLOGY, INC.
10 THOMAS
IRVINE, CA 92618 USA
Phone: (949) 465-0900
Fax: (949) 465-0905

MODEL: **L1618**

DRAWN BY: R. WALKER

APPROVED BY: J. MOKHBERY

DWG No.: **F4031**

CHECKED BY: XXXXX

DATE: **Aug. 14, 2001**