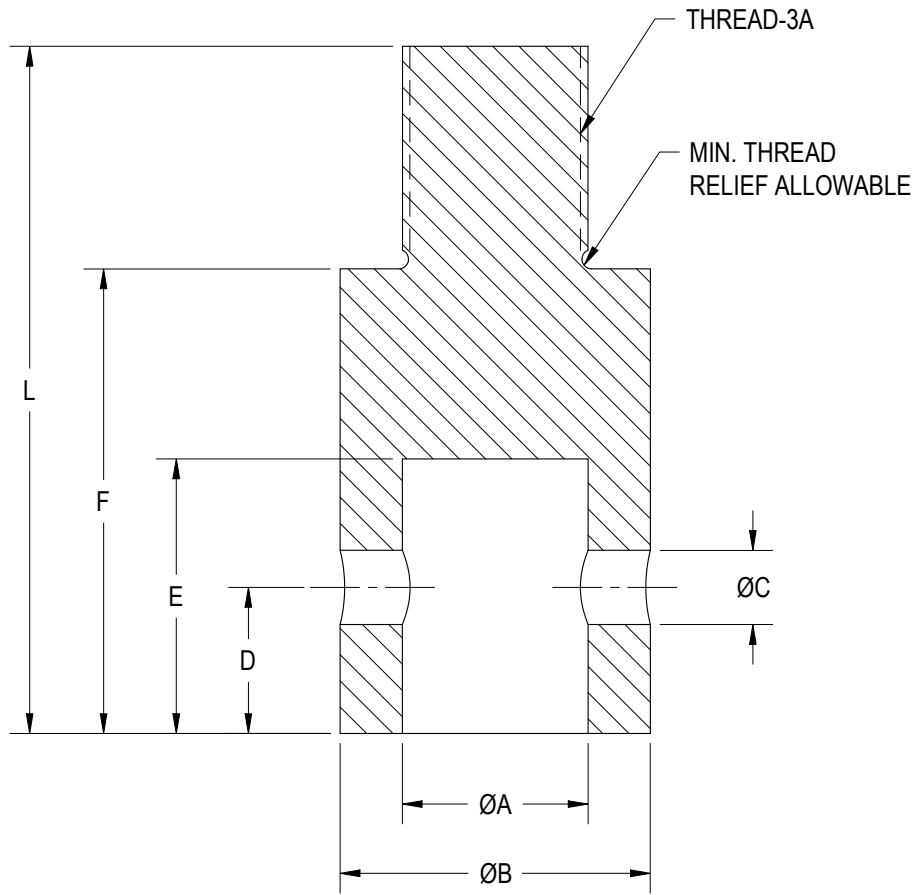
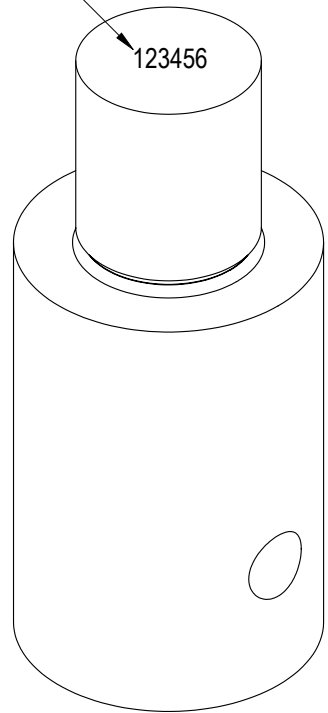
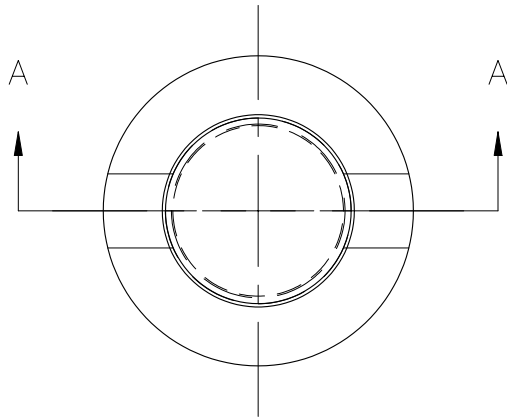


ENGRAVE STOCK#
123456



SECTION A-A

STOCK#	DRAWING No.	A	B	C	D	E	F	L	THREAD
MCP01640	FM1826-01	0.626 / 0.625	0.98	0.314 / 0.313	0.443 / 0.434	0.846	1.43	2.68	5/8-18
MCP01641	FM1826-02	1.252 / 1.250	1.98	0.501 / 0.500	0.984	1.850	3.13	4.63	1 1/4-12

OLD DRAWING# \$F4628

MATERIAL:

17-4 PH S.S.

HEAT TREATMENT - FINISH:

H900, FINE GLASS BEADED

REVISIONS: (Refer to dwg # revision sheet)

▲ XXX

ADAPTER

STANDARD NOTES: (Unless Otherwise Specified)

- ALL DIMENSIONS ARE IN INCHES
- DRAWING INTERPRETATION DIMS. PER ASME-Y14.5M
- SURFACE FINISH $\sqrt{32}$ OR BETTER
- REMOVE BURRS AND BREAK SHARP EDGES .005 - .015
- THREADS PER HANDBOOK H-28
- DIMENSIONS ARE SHOWN AFTER PLATING

ANGLE:

$\pm 1/2^\circ$

CHAMFER:

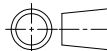
$\pm 5^\circ$

TOLERANCE:

.XX $\pm .01$

.XXX $\pm .005$

3rd ANGLE PROJ.



This drawing is submitted solely for the information and exclusive use of the original addressee. It is not to be divulged in whole or in part, by any firm or individual without written permission from:

FUTEK
ADVANCED SENSOR TECHNOLOGY, INC.

10 THOMAS
IRVINE, CA 92618 USA
Phone: (949) 465-0900
Fax: (949) 465-0905

MODEL: **ACCESSORIES**

DWG No.: **FM1826**

DRAWN BY: **H. AU**

CHECKED BY: **XXXXXX**

APPROVED BY: **R. WALKER**

DATE: **AUG. 04, 2005**