

FUTEK MODEL PFP350

PRESSURE SENSOR WITH LEMO CONNECTOR (Previously P4020/P4021)

Drawing Number: FI1158-B

INCH [mm] R.O.= Rated Output

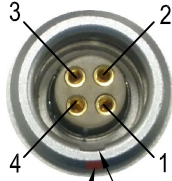
WIRING CODE (CC4)

+Excitation	-Excitation	+Signal	-Signal
PIN 1	PIN 4	PIN 2	PIN 3

Cable Option

WIRING CODE (CC1)

+Excitation	-Excitation	+Signal	-Signal
RED	BLACK	GREEN	WHITE
+SENSE	-SENSE	Shield	
ORANGE	BLUE	FLOATING	

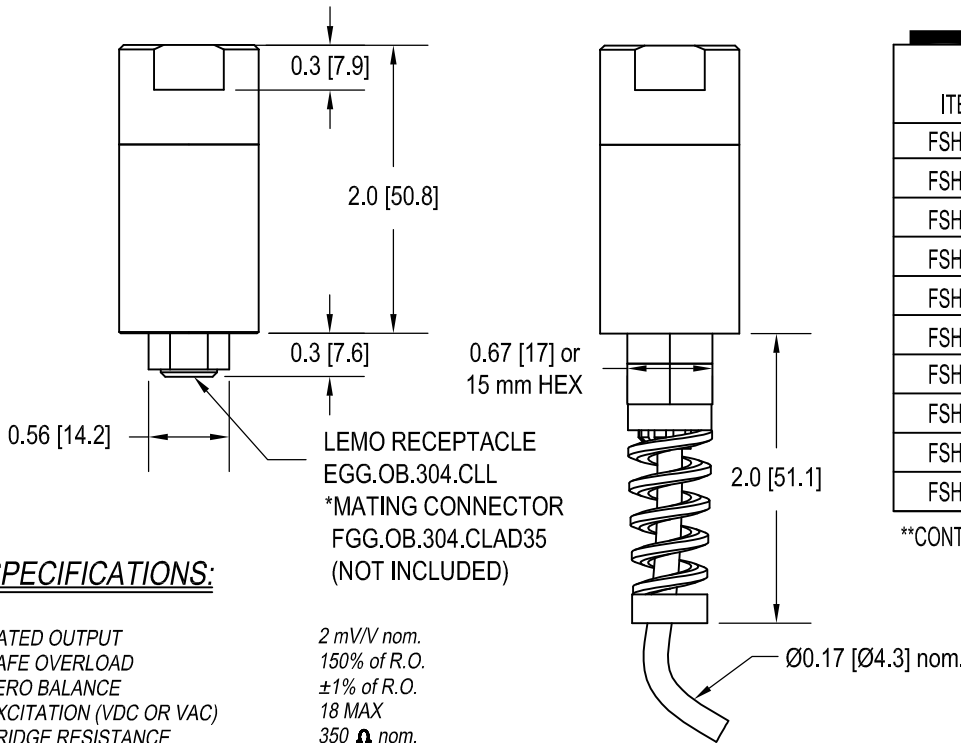
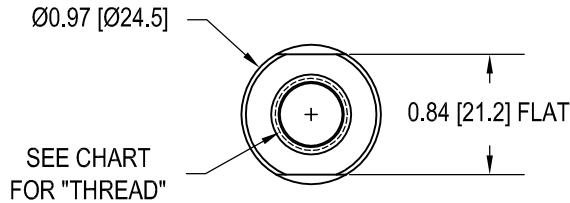


RED DOT KEY

FUTEK LABEL



S/N:

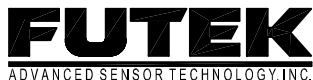


ITEM#	CAPACITIES		
	PSI	BAR	THREAD
FSH00821	300	20.7	1/4-18 NPT
FSH03368			7/16-20
FSH00823	500	34.5	1/4-18 NPT
FSH03370			7/16-20
FSH00825	1000	69.0	1/4-18 NPT
FSH03372			7/16-20
FSH00827	3000	206.8	1/4-18 NPT
FSH00829	5000	344.7	
FSH00831	7500	517.1	
FSH00833	10000	689.5	

**CONTACT FACTORY FOR CABLE OPTION

SPECIFICATIONS:

- RATED OUTPUT: 2 mV/V nom.
- SAFE OVERLOAD: 150% of R.O.
- ZERO BALANCE: ±1% of R.O.
- EXCITATION (VDC OR VAC): 18 MAX
- BRIDGE RESISTANCE: 350 Ω nom.
- NONLINEARITY: ±0.5% of R.O.
- HYSTERESIS: ±0.5% of R.O.
- NONREPEATABILITY: ±0.1% of R.O.
- TEMP. SHIFT ZERO: ±0.02% of R.O./°F [0.036% of R.O./°C]
- TEMP. SHIFT SPAN: ±0.02% of LOAD/°F [0.036% of LOAD/°C]
- COMPENSATED TEMP.: 60 to 160°F [15 to 72°C]
- OPERATING TEMP.: -60 to 250°F [-50 to 121°C]
- WEIGHT: 4.5 oz [128 g]
- MATERIAL: 17-4PH S.S.
- CONNECTOR: 4 Pin Lemo Receptacle (EGG.OB.304.CLL)
- CABLE (AVAILABLE OPTION): #28 AWG, 6 Conductor, Spiral Shielded Polyurethane Cable 3 ft [1 m] Long
- ACCESSORIES AND RELATED INSTRUMENTS AVAILABLE
- CALIBRATION (INCLUDED): 2pt. (5pt. AVAILABLE) 60.4KΩ SHUNT CAL. VALUE.
- CALIBRATION TEST EXCITATION: 10 VDC



This drawing is submitted solely for the information and exclusive use of the original addressee. It is not to be divulged in whole or in part, by any firm or individual without written permission from FUTEK

10 THOMAS
IRVINE, CA 92618 USA
1-800-23-FUTEK (38835)

INTERNET:
<http://www.futek.com>