

Terms and Conditions of Use

This drawing, including all information depicted herein (collectively, "Drawing"), is FUTEK's property and protected under applicable law, including copyright. FUTEK reserves all rights. The Drawing is provided solely for your information and exclusive use. **Except as expressly approved by FUTEK in writing, you may not reproduce or share this Drawing**, in whole or part, with any other firm or individual, or attempt to reverse engineer the Drawing or data contained therein. Any reproduction of this Drawing in whole or part must include this legend.

By accessing the Drawing, you agree that you have read, understand, and agree to abide by the stated Terms and Conditions of Use.

© 2023 FUTEK Advanced Sensor Technology, Inc.

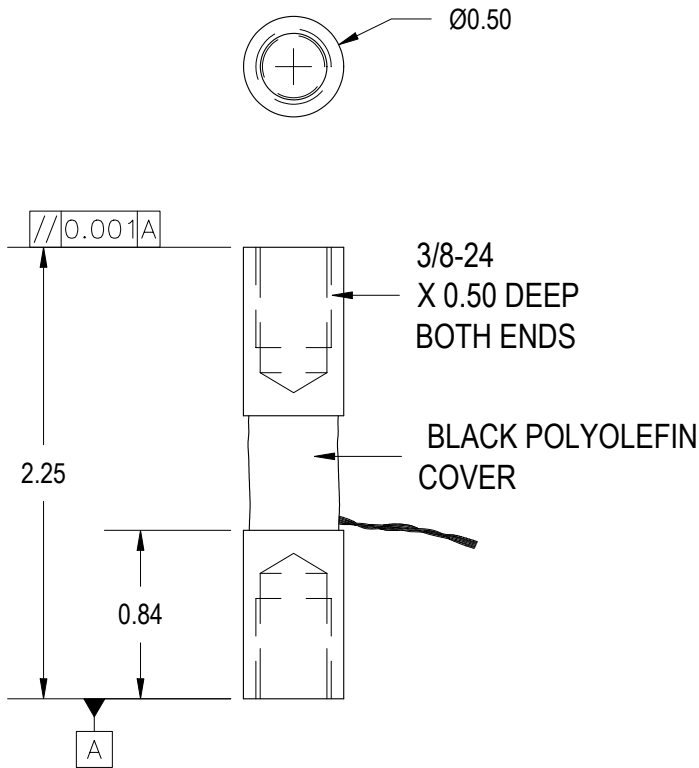
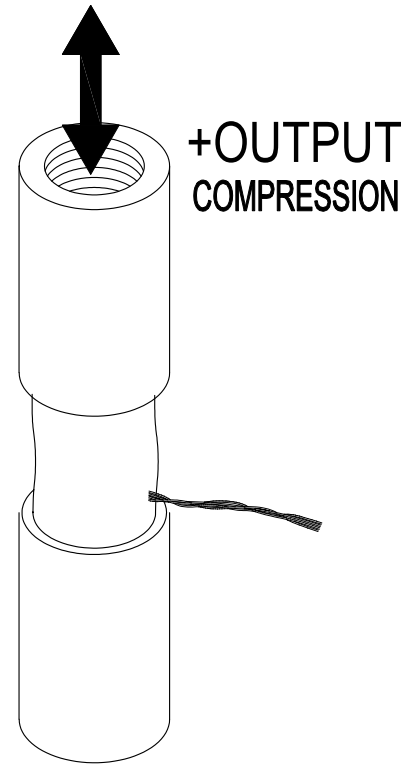
FUTEK MODEL QLA149

STOCK NUMBER: QSH00132

FEMALE THREAD ROD END LOAD CELL

(PREVIOUSLY Q10417)

| | | | |
|-------------|-------------|--------------------|---------|
| INCH (mm) | | R.O.= Rated Output | |
| WIRING CODE | | | |
| +Excitation | -Excitation | +Signal | -Signal |
| RED | BLACK | GREEN | WHITE |



SPECIFICATIONS:

| | |
|---|---|
| RATED OUTPUT | 0.8 mV/V nom. |
| CAPACITY | 500 lb |
| SAFE OVERLOAD | 150% of R.O. |
| ZERO BALANCE | ±3% of R.O. |
| EXCITATION (VDC OR VAC) | 18 MAX |
| BRIDGE RESISTANCE | 350 Ω nom |
| NONLINEARITY | ±0.5% of R.O. |
| NONREPEATABILITY | ±0.1% of R.O. |
| TEMP. SHIFT ZERO | ±0.02% of R.O./°F |
| TEMP. SHIFT SPAN | ±0.02% of LOAD/°F |
| COMPENSATED TEMP. | 60 to 160°F |
| OPERATING TEMP. | -40 to 180°F |
| MATERIAL | ALUMINUM |
| CABLE: 29 AWG, 4 Conductor Spiral Teflon Cable, 6 in Long | |
| CALIBRATION (STD) | 5 pt. Compression; 60 KΩ SHUNT CAL. VALUE |
| CALIBRATION TEST EXCITATION | 10 VDC |

OLD REF DWG F3755-A

| | |
|--|---|
| MATERIAL: | — |
| HEAT TREATMENT - FINISH: | — |
| REVISIONS: (Refer to dwg # revision sheet) | |
| △ XXX | |

OUTLINE DRAWING

STANDARD NOTES: (Unless Otherwise Specified)

- ALL DIMENSIONS ARE IN INCHES
- DRAWING INTERPRETATION DIMS. PER ASME-Y14.5M
- REMOVE BURRS AND BREAK SHARP EDGES .005 - .015
- THREADS PER HANDBOOK H-28
- DIMENSIONS ARE SHOWN AFTER PLATING

ANGLE: ±1/2°
 CHAMFER: ±5°
 TOLERANCE: .XX ±.01
 .XXX ±.005

3rd ANGLE PROJ.

This drawing, including all information depicted herein (collectively, "Drawing"), is FUTEK's property and protected under applicable law, including copyright. FUTEK reserves all rights. The Drawing is provided solely for your information and exclusive use. Except as expressly approved by FUTEK in writing, you may not reproduce or share this Drawing in whole or part, with any other firm or individual, or attempt to reverse engineer the Drawing or data contained therein. Any reproduction of this Drawing in whole or part must include this legend.

FUTEK

CAGE: 1X8M6

| | |
|----------------------------|---------------------------|
| MODEL: QLA149 | DWG No.: FO1105 |
| DRAWN BY: R. WALKER | CHECKED BY: — |
| APPROVED BY: — | DATE: Aug 19, 2005 |