

Terms and Conditions of Use

This drawing, including all information depicted herein (collectively, "Drawing"), is FUTEK's property and protected under applicable law, including copyright. FUTEK reserves all rights. The Drawing is provided solely for your information and exclusive use. **Except as expressly approved by FUTEK in writing, you may not reproduce or share this Drawing**, in whole or part, with any other firm or individual, or attempt to reverse engineer the Drawing or data contained therein. Any reproduction of this Drawing in whole or part must include this legend.

By accessing the Drawing, you agree that you have read, understand, and agree to abide by the stated Terms and Conditions of Use.

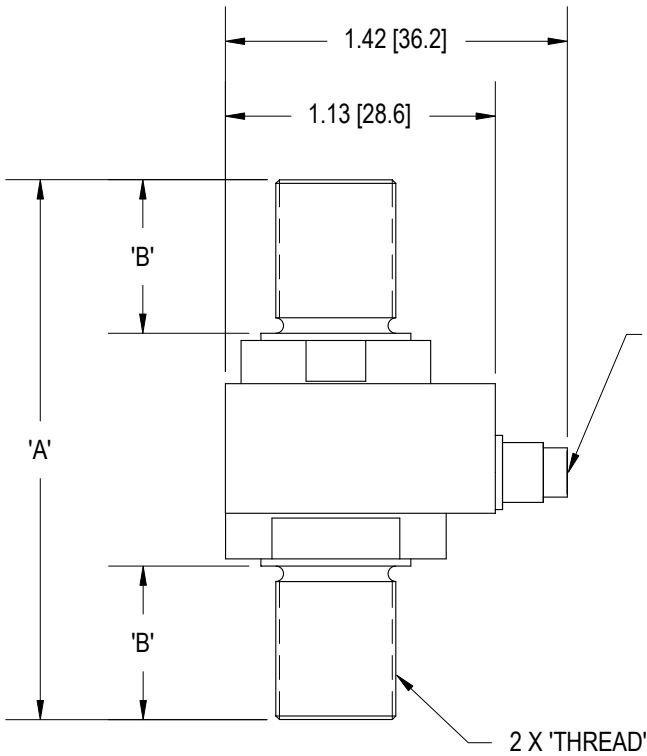
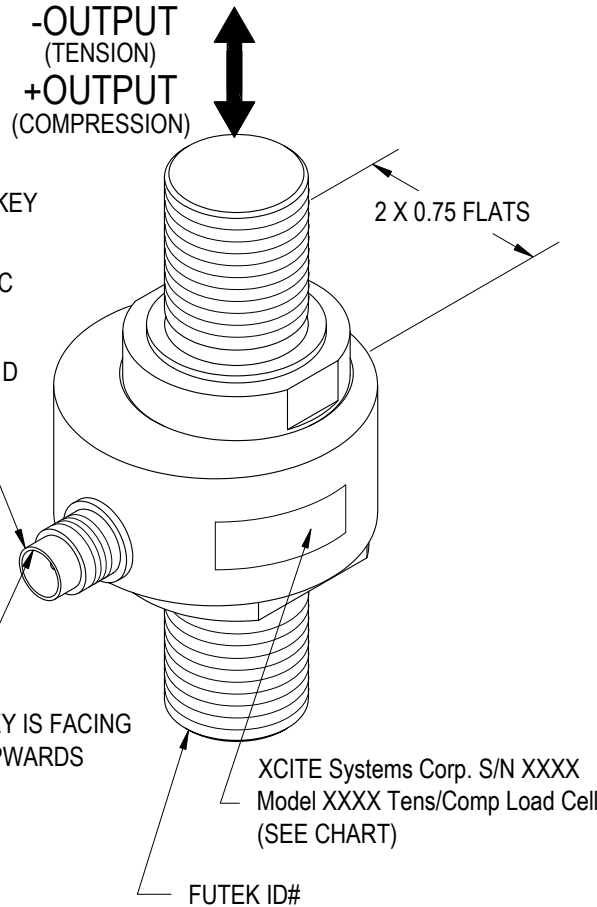
© 2023 FUTEK Advanced Sensor Technology, Inc.

FUTEK MODEL QLA186

XCITE LOAD CELL

(Previously Q07324)

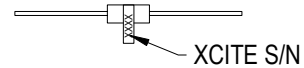
INCH (mm)		R.O.= Rated Output	
WIRING CODE			
+Excitation	-Excitation	+Signal	-Signal
RED PIN 'A'	BLACK PIN 'B'	GREEN/YELLOW PIN 'C'	WHITE PIN 'D'



SPECIFICATIONS:

RATED OUTPUT	1 mV/V nom.
SAFE OVERLOAD	150% of R.O.
ZERO BALANCE	±2% of R.O.
EXCITATION (VDC OR VAC)	10 recommended, 15 max
BRIDGE RESISTANCE	350 Ω nom.
NONLINEARITY	±1% of R.O.
HYSTERESIS	±1% of R.O.
NONREPEATABILITY	±0.2% of R.O.
TEMP. SHIFT ZERO	±0.01% of R.O./°F [0.02% of R.O./°C]
TEMP. SHIFT SPAN	±0.02% of LOAD/°F [0.04% of LOAD/°C]
OPERATING TEMP.	50 to 150°F [10 to 66°C]
NATURAL FREQUENCY	20 kHz
WEIGHT	0.3 lb [136 g]
MATERIAL	17-4 S.S.
CALIBRATION	5 pt. COMPRESSION
SHUNT CAL:	301K Ohm, 1/4 Watt, 0.1%, 25ppm Metal Film Resistor

REFER TO P.O. FOR PROPER XCITE S/N
301K OHM SHUNT WILL SIMULATE APPROX. 750 lb



SHUNT CAL BOX

S/N XXXX
XXX KOhms RCAL
.XXXX mV/V (-Excitation & -Signal)
Equivalent to XXX lb

XCITE MODEL#	FUTEK STOCK#	CAPACITIES			THREAD	FREQUENCY RESPONSE @ 1000 lb PRELOAD
		lb	N	A		
2522	QSH00338	2500	11120	1.75 [44.5]	3/8-24	150 Hz
5022	QSH00339	5000	22240	2.25 [57.2]	1/2-20	200 Hz

OLD REF DWG# F1239-B, F1740-B

OUTLINE DRAWING

STANDARD NOTES: (Unless Otherwise Specified)

- ALL DIMENSIONS ARE IN INCHES
- DRAWING INTERPRETATION DIMS. PER ASME-Y14.5M
- REMOVE BURRS AND BREAK SHARP EDGES .005 - .015
- THREADS PER HANDBOOK H-28
- DIMENSIONS ARE SHOWN AFTER PLATING

ANGLE:
±1/2°

CHAMFER:
±5°

TOLERANCE:
.XX ±.01
.XXX ±.005

3rd ANGLE PROJ.



MATERIAL:
—

HEAT TREATMENT - FINISH:
—

REVISIONS: (Refer to dwg # revision sheet)

▲ XXX

FUTEK

CAGE: 1X8M6

MODEL: QLA186

DRAWN BY: H. AU

APPROVED BY: R. WALKER

This drawing, including all information depicted herein (collectively, "Drawing"), is FUTEK's property and protected under applicable law, including copyright. FUTEK reserves all rights. The Drawing is provided solely for your information and exclusive use. Except as expressly approved by FUTEK in writing, you may not reproduce or share this Drawing in whole or part, with any other firm or individual, or attempt to reverse engineer the Drawing or data contained therein. Any reproduction of this Drawing in whole or part must include this legend.

DWG No.: FO1103

CHECKED BY: XXXXX

DATE: AUG 15, 2005