

Terms and Conditions of Use

This drawing, including all information depicted herein (collectively, "Drawing"), is FUTEK's property and protected under applicable law, including copyright. FUTEK reserves all rights. The Drawing is provided solely for your information and exclusive use. **Except as expressly approved by FUTEK in writing, you may not reproduce or share this Drawing**, in whole or part, with any other firm or individual, or attempt to reverse engineer the Drawing or data contained therein. Any reproduction of this Drawing in whole or part must include this legend.

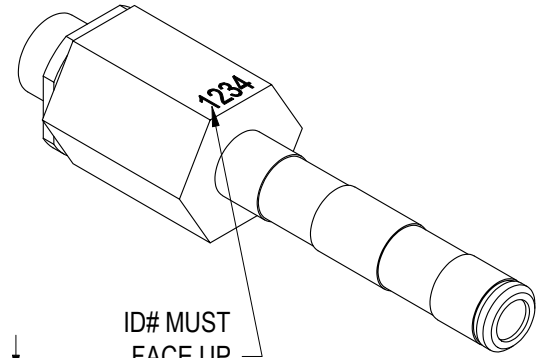
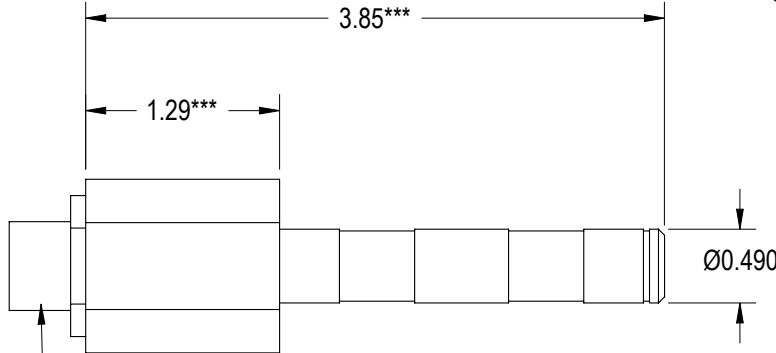
By accessing the Drawing, you agree that you have read, understand, and agree to abide by the stated Terms and Conditions of Use.

© 2023 FUTEK Advanced Sensor Technology, Inc.

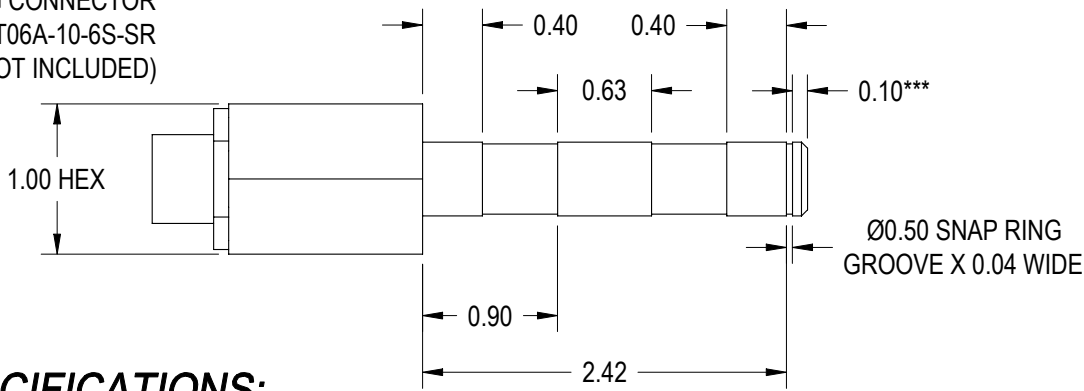
FUTEK MODEL QLA193 AMPLIFIED LOAD SENSING CLEVIS PIN

STOCK NUMBER: QSH00353

INCH (mm)		R.O.= Rated Output
WIRING CODE		
12-24 VDC PIN A	RETURN PIN B	0-5 VDC OUTPUT PIN C



BENDIX RECEPTACLE
PT04A-10-6P***
MATING CONNECTOR
PT06A-10-6S-SR
(NOT INCLUDED)



SPECIFICATIONS:

RATED OUTPUT	5 VDC <i>nom</i>
CAPACITY	1500 lb
SAFE OVERLOAD	150% of R.O.
ZERO BALANCE	2.5 ±0.1 VDC
EXCITATION	12-24 VDC
NONLINEARITY	±2% of R.O.
NONREPEATABILITY	±0.25 of R.O.
TEMP. SHIFT ZERO	±0.03% of R.O./°F
TEMP. SHIFT SPAN	±0.03% of LOAD/°F
COMPENSATED TEMP.	60 to 160°F
OPERATING TEMP.	-40 to 180°F
MATERIAL	STAINLESS STEEL
CONNECTOR: 6 Pin BENDIX Receptacle (PT04A-10-6P)	

PRELIMINARY
DRAWING

***NOTE DIMENSION CHANGE

MATERIAL:

—

HEAT TREATMENT - FINISH:

—

REVISIONS: (Refer to dwg # revision sheet)

△ XXX

OUTLINE DRAWING

STANDARD NOTES: (Unless Otherwise Specified)

- ALL DIMENSIONS ARE IN INCHES
- DRAWING INTERPRETATION DIMS. PER ASME-Y14.5M
- REMOVE BURRS AND BREAK SHARP EDGES .005 - .015
- THREADS PER HANDBOOK H-28
- DIMENSIONS ARE SHOWN AFTER PLATING

3rd ANGLE PROJ.



ANGLE:

±1/2°

CHAMFER:

±5°

TOLERANCE:

.XX ±.01

.XXX ±.005

FUTEK

CAGE: 1X8M6

MODEL: QLA193

DRAWN BY: J. VARGAS

APPROVED BY: XXXXX

This drawing, including all information depicted herein (collectively, "Drawing"), is FUTEK's property and protected under applicable law, including copyright. FUTEK reserves all rights. The Drawing is provided solely for your information and exclusive use. **Except as expressly approved by FUTEK in writing, you may not reproduce or share this Drawing**, in whole or part, with any other firm or individual, or attempt to reverse engineer the Drawing or data contained therein. Any reproduction of this Drawing in whole or part must include this legend.

DWG No.: FO1047

CHECKED BY: XXXXX

DATE: April 24, 2004