

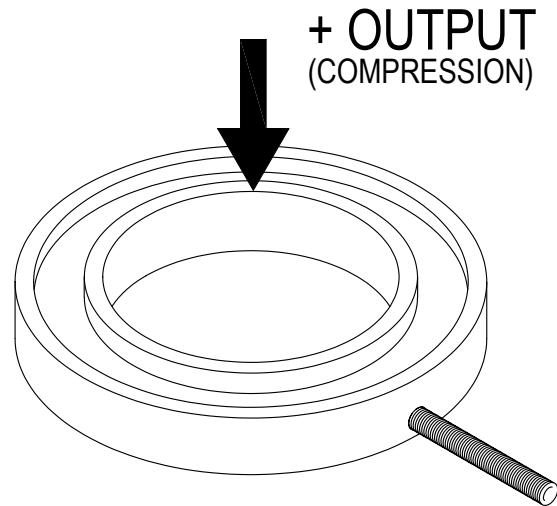
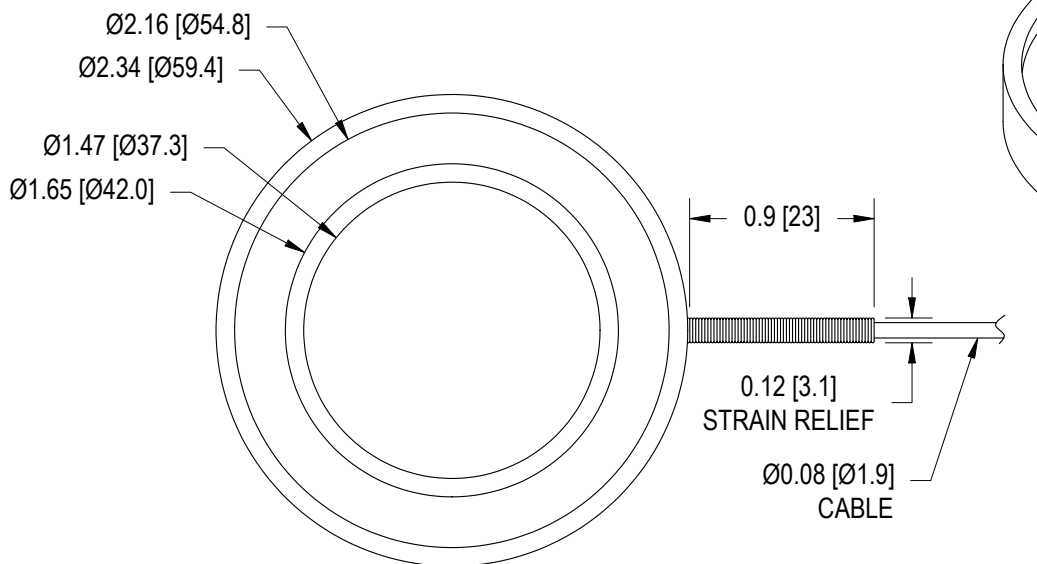
# FUTEK MODEL QLA237

STOCK NUMBER: QSH00314

# CUSTOM DONUT LOAD CELL

(PREVIOUSLY Q07567)

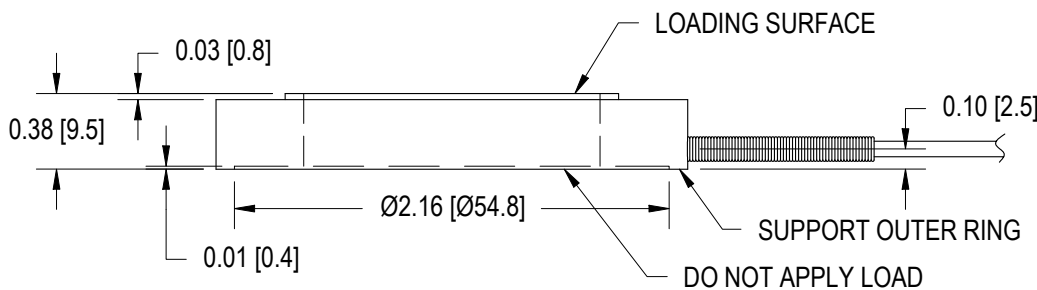
INCH (mm)		R.O.= Rated Output	
WIRING CODE (WC1)			
+Excitation	-Excitation	+Signal	-Signal
RED	BLACK	GREEN	WHITE
Shield			
FLOATING			



**Note:**

While torquing bolts, high tension forces will occur during installation which could result in overloading the sensor. Futek recommends connecting sensor to a system in order to monitor the applied forces.

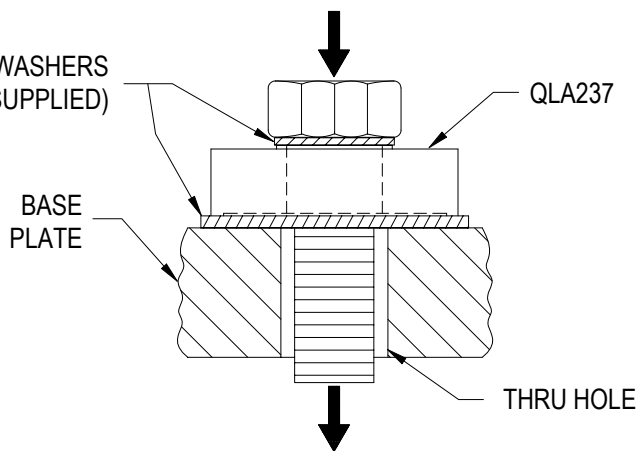
Futek is not liable or responsible for the mishandling of the sensor during installation.



## SPECIFICATIONS:

<b>RATED OUTPUT</b>	2 mV/V nom.
<b>CAPACITY</b>	250 lb
<b>SAFE OVERLOAD</b>	50% of R.O.
<b>EXCITATION (VDC OR VAC)</b>	18 MAX
<b>BRIDGE RESISTANCE</b>	700 Ω nom.
<b>NONLINEARITY</b>	±3.0% of R.O.
<b>NONREPEATABILITY</b>	±0.2% of R.O.
<b>TEMP. SHIFT ZERO</b>	±0.005% of R.O./°F (0.009% of R.O./°C)
<b>COMPENSATED TEMP.</b>	60 to 160°F (15 to 72°C)
<b>OPERATING TEMP.</b>	-60 to 212°F (-50 to 100°C)
<b>MATERIAL</b>	Stainless Steel
<b>CABLE: #29 AWG, 4 Conductor, Shielded Teflon Cable 10 ft [3 m] Long</b>	

## MOUNTING DIAGRAM



MATERIAL:

—

HEAT TREATMENT - FINISH:

—

REVISIONS: (Refer to dwg # revision sheet)

△ XXX

## OUTLINE DRAWING

STANDARD NOTES: (Unless Otherwise Specified)

- ALL DIMENSIONS ARE IN INCHES
- DRAWING INTERPRETATION DIMS. PER ASME-Y14.5M
- REMOVE BURRS AND BREAK SHARP EDGES .005 - .015
- THREADS PER HANDBOOK H-28
- DIMENSIONS ARE SHOWN AFTER PLATING

ANGLE:

±1/2°

CHAMFER:

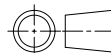
±5°

TOLERANCE:

.XX ±.01

.XXX ±.005

3rd ANGLE PROJ.



This drawing is submitted solely for the information and exclusive use of the original addressee. It is not to be divulged in whole or in part, by any firm or individual without written permission from:

**FUTEK**  
ADVANCED SENSOR TECHNOLOGY, INC.

10 THOMAS  
IRVINE, CA 92618 USA  
Phone: (949) 465-0900  
Fax: (949) 465-0905

**CAGE: 1X8M6**

**MODEL: QLA237**

**DWG No.: FO1095**

**DRAWN BY: H. AU**

**CHECKED BY: XXXXX**

**APPROVED BY: XXXXX**

**DATE: JUN 1, 2005**