

Terms and Conditions of Use

This drawing, including all information depicted herein (collectively, "Drawing"), is FUTEK's property and protected under applicable law, including copyright. FUTEK reserves all rights. The Drawing is provided solely for your information and exclusive use. **Except as expressly approved by FUTEK in writing, you may not reproduce or share this Drawing**, in whole or part, with any other firm or individual, or attempt to reverse engineer the Drawing or data contained therein. Any reproduction of this Drawing in whole or part must include this legend.

By accessing the Drawing, you agree that you have read, understand, and agree to abide by the stated Terms and Conditions of Use.

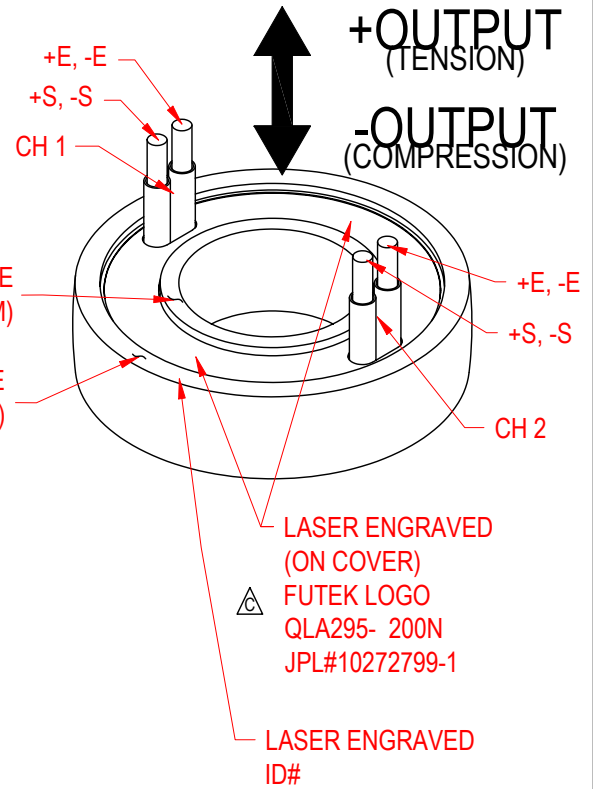
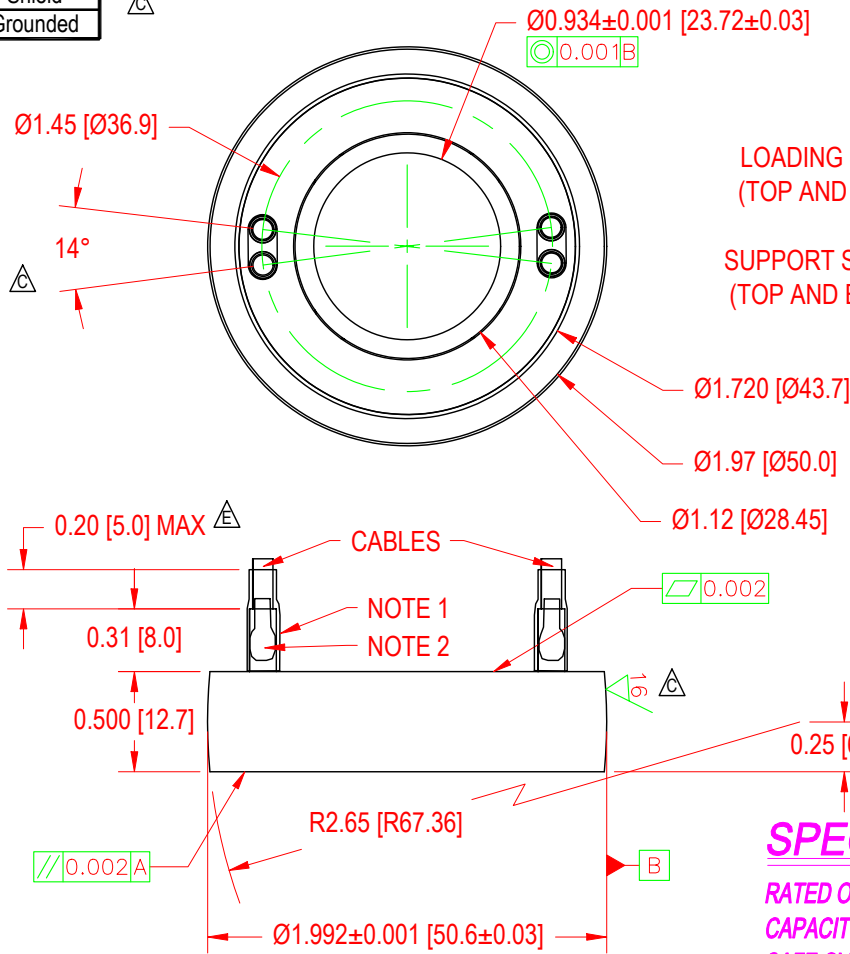
© 2023 FUTEK Advanced Sensor Technology, Inc.

FUTEK MODEL QLA295 Cryogenic Donut Load Cell

STOCK NUMBER: QSH01025

INCH [mm] | R.O.= Rated Output

WIRING CODE			
+Excitation	-Excitation	+Signal	-Signal
RED*	BLACK*	GREEN*	WHITE*
Shield			
Grounded			



SPECIFICATIONS:

RATED OUTPUT	1.5 mV/V nom.
CAPACITY	45 lbs (200 N)
SAFE OVERLOAD	150% of R.O.
ZERO BALANCE	±0.125 mV/V
EXCITATION (VDC OR VAC)	15 MAX
BRIDGE RESISTANCE	700 Ω nom
NONLINEARITY	±1% of R.O.
NONREPEATABILITY	±0.5% of R.O.
TEMP. SHIFT ZERO	±0.01% of R.O./°F (0.02% of R.O./°C)
TEMP. SHIFT SPAN	±0.05% of LOAD/°F (0.09% of LOAD/°C)
COMPENSATED TEMP.	-112 to 158°F (-80 to 70°C)
OPERATING TEMP.	-112 to 158°F (-80 to 70°C)
NONOPERATING TEMP.	-211 to 257°F (-135 to 125°C)
WEIGHT	Approx 0.2 lb (Excluding cables)
MATERIAL- FLEXURE	15-5ph S.S.
CABLE(S):	Ø0.10, 28 AWG, Twisted Pairs, 3.3 ft (1 m) Long (Supplied by Customer)

NOTES:

- △ * REMOVABLE COLOR CODED SHRINK TUBE SUPPLIED AT PIGTAIL END OF CABLE
- △ 1) SHRINK TUBE SUPPLIED BY CUSTOMER
- △ 2) CABLE SHIELD SOLDERED TO OUTSIDE OF FERRULE TUBE.

MATERIAL:

—

HEAT TREATMENT - FINISH:

—

REVISIONS: (Refer to dwg # revision sheet)

- △ 2-11-08
- △ 2-15-08
- △ 2-28-08
- △ 4-2-08
- △ 7-30-08

OUTLINE DRAWING

STANDARD NOTES: (Unless Otherwise Specified)

- ALL DIMENSIONS ARE IN INCHES
- DRAWING INTERPRETATION DIMS. PER ASME-Y14.5M
- REMOVE BURRS AND BREAK SHARP EDGES .005 - .015
- THREADS PER HANDBOOK H-28
- DIMENSIONS ARE SHOWN AFTER PLATING

3rd ANGLE PROJ.



ANGLE:

±1/2°

CHAMFER:

±5°

TOLERANCE:

.X ±0.1
.XX ±0.01
.XXX ±0.005

FUTEK

This drawing, including all information depicted herein (collectively, "Drawing"), is FUTEK's property and protected under applicable law, including copyright. FUTEK reserves all rights. The Drawing is provided solely for your information and exclusive use. Except as expressly approved by FUTEK in writing, you may not reproduce or share this Drawing, in whole or part, with any other firm or individual, or attempt to reverse engineer the Drawing or data contained therein. Any reproduction of this Drawing in whole or part must include this legend.

CAGE: 1X8M6

MODEL: QLA295

DWG No.: FO1206-E

DRAWN BY: R. WALKER

CHECKED BY: J. V. MEISELBACH

APPROVED BY: -

DATE: Jan 28, 2008