

## Terms and Conditions of Use

This drawing, including all information depicted herein (collectively, "Drawing"), is FUTEK's property and protected under applicable law, including copyright. FUTEK reserves all rights. The Drawing is provided solely for your information and exclusive use. **Except as expressly approved by FUTEK in writing, you may not reproduce or share this Drawing**, in whole or part, with any other firm or individual, or attempt to reverse engineer the Drawing or data contained therein. Any reproduction of this Drawing in whole or part must include this legend.

By accessing the Drawing, you agree that you have read, understand, and agree to abide by the stated Terms and Conditions of Use.

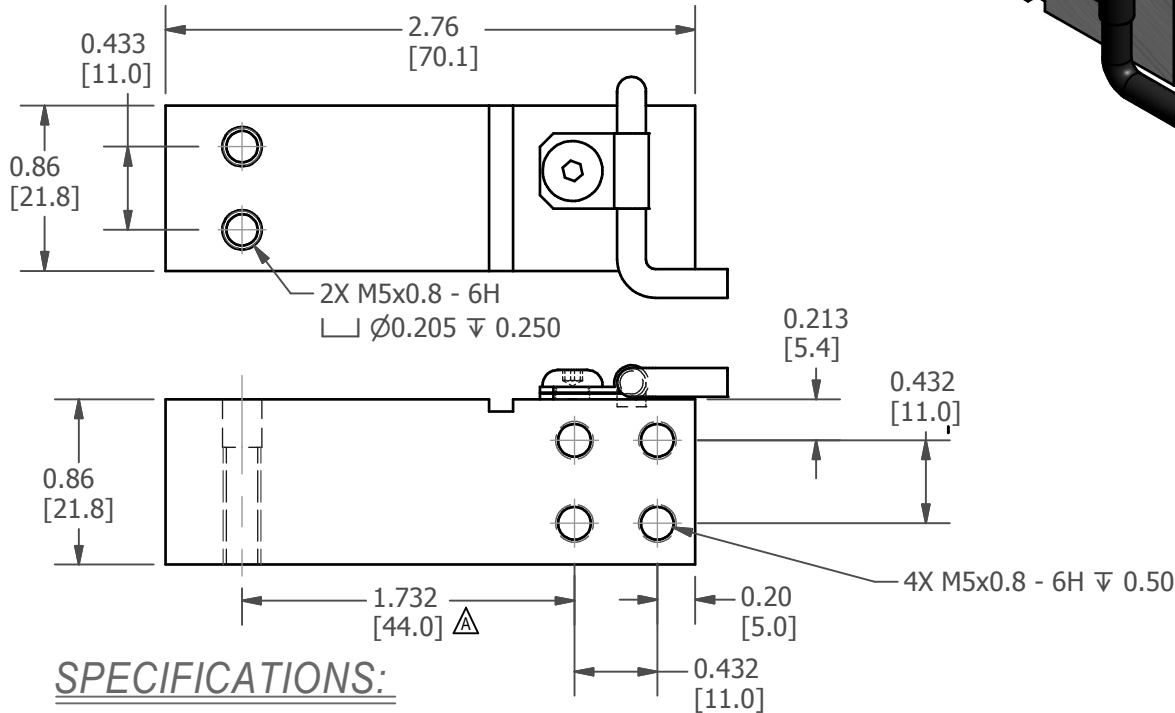
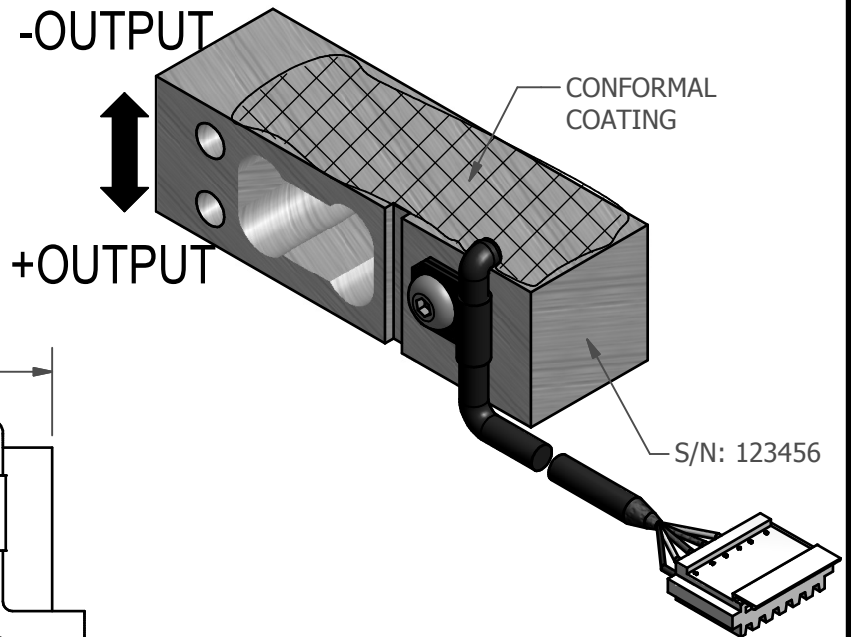
© 2023 FUTEK Advanced Sensor Technology, Inc.

# FUTEK MODEL QLA348

# PARALLEL BEAM LOAD CELL

ITEM NUMBER: QSH01485

INCH (mm)	R.O.= Rated Output		
WIRING CODE			
+Excitation	-Excitation	+Signal	-Signal
RED (PIN 3)	WHITE (PIN 2)	BLUE (PIN 1)	GREEN (PIN 5)
Shield			
Floating (PIN 4)			



## SPECIFICATIONS:

RATED OUTPUT	2 mV/V nom.
CAPACITY	175lb (778 N)
SAFE OVERLOAD	▲ 150 % of R.O.
ZERO BALANCE	± 2% of R.O.
EXCITATION (VDC OR VAC)	18 MAX
BRIDGE RESISTANCE	350Ω nom
NONLINEARITY	± 0.05% of R.O.
HYSTERESIS	± 0.05% of R.O.
NONREPEATABILITY	± 0.01% of R.O.
TEMP. SHIFT ZERO	± 0.01% of R.O./ °F (± 0.018% of R.O./ °C)
TEMP. SHIFT SPAN	± 0.01% of LOAD/ °F (± 0.018% of LOAD/ °C)
COMPENSATED TEMP.	60 to 160 °F (15 to 71 °C)
OPERATING TEMP.	0 to 160 °F (-18 to 71 °C)
WEIGHT	APPROX 0.2 lb (91 g)
MATERIAL	ALUMINUM

CABLE: 26 Awg 6 Conductor Foil Shielded PVC Cable , 38 in. Long with 6 pin JST female connector

CUSTOMER APPROVAL- COMPANY:

CUSTOMER APPROVAL- NAME / DATE:

REVISIONS: (Refer to dwg # revision sheet)

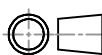
A	4/4/2011
---	----------

## OUTLINE DRAWING

STANDARD NOTES: (Unless Otherwise Specified)

ALL DIMENSIONS ARE IN INCHES  
 DRAWING INTERPRETATION DIMS. PER ASME-Y14.5M  
 REMOVE BURRS AND BREAK SHARP EDGES .005 - .015  
 THREADS PER HANDBOOK H-28  
 DIMENSIONS ARE SHOWN AFTER PLATING

3rd ANGLE PROJ.



ANGLE:  
± 1/2°

CHAMFER:  
± 5°

TOLERANCE:  
.X ± 0.1"  
.XX ± 0.01"  
.XXX ± 0.005"

# FUTEK

This drawing, including all information depicted herein (collectively, "Drawing"), is FUTEK's property and protected under applicable law, including copyright. FUTEK reserves all rights. The Drawing is provided solely for your information and exclusive use. Except as expressly approved by FUTEK in writing, you may not reproduce or share this Drawing in whole or part, with any other firm or individual, or attempt to reverse engineer the Drawing or data contained therein. Any reproduction of this Drawing in whole or part must include this legend.

MODEL: <b>QLA348</b>	DWG No.: <b>FO1288-A</b>
DRAWN BY: <i>R. Walker</i>	CREATED DATE: 3/21/2011
APPROVED BY: <i>J. VARGAS</i>	APPROVED DATE: 3/23/2011
CHECKED BY:	CAGE: 1X8M6 SHEET: 1 OF 1