

Terms and Conditions of Use

This drawing, including all information depicted herein (collectively, "Drawing"), is FUTEK's property and protected under applicable law, including copyright. FUTEK reserves all rights. The Drawing is provided solely for your information and exclusive use. **Except as expressly approved by FUTEK in writing, you may not reproduce or share this Drawing**, in whole or part, with any other firm or individual, or attempt to reverse engineer the Drawing or data contained therein. Any reproduction of this Drawing in whole or part must include this legend.

By accessing the Drawing, you agree that you have read, understand, and agree to abide by the stated Terms and Conditions of Use.

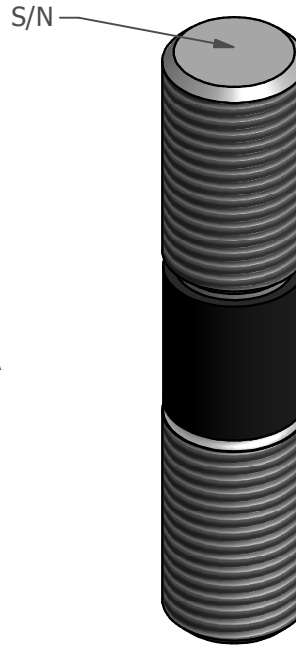
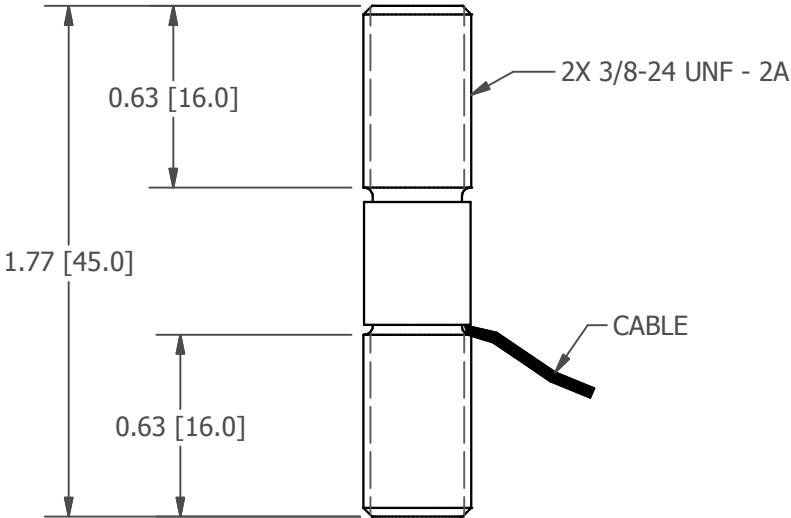
© 2023 FUTEK Advanced Sensor Technology, Inc.

FUTEK MODEL QLA349

Male Threaded Rod End Load Cell

ITEM NUMBER: QSH01488

INCH [mm]		R.O. = Rated Output	
WIRING CODE			
+Excitation	-Excitation	+Signal	-Signal
RED PIN A	BLACK PIN B	GREEN PIN C	WHITE PIN D



+OUTPUT
(TENSION)

↕

-OUTPUT
(COMPRESSION)

SPECIFICATIONS:

RATED OUTPUT	2.5 mV/V nom.
CAPACITY	1500 lb [6672 kN]
SAFE OVERLOAD	150% of R.O.
ZERO BALANCE	± 3% of R.O.
EXCITATION (VDC OR VAC)	15 MAX
BRIDGE RESISTANCE	350 Ω nom
NONLINEARITY	± 0.5% of R.O.
HYSTERESIS	± 0.5% of R.O.
NONREPEATABILITY	± 0.1% of R.O.
TEMP. SHIFT ZERO	± 0.02% of R.O./ °F (0.036% of R.O./ °C)
TEMP. SHIFT SPAN	± 0.02% of LOAD/ °F (0.036% of LOAD/ °C)
COMPENSATED TEMP.	60 to 160 °F (15 to 71 °C)
OPERATING TEMP.	-40 to 180 °F (-40 to 82 °C)
MATERIAL	Aluminum
CABLE:	26 Awg, 4 Conductor Teflon Cable, 6 in Long

CUSTOMER APPROVAL- COMPANY:

CUSTOMER APPROVAL- NAME / DATE:

REVISIONS: (Refer to dwg # revision sheet)

OUTLINE DRAWING

STANDARD NOTES: (Unless Otherwise Specified)

ALL DIMENSIONS ARE IN INCHES

DRAWING INTERPRETATION DIMS. PER ASME-Y14.5M

REMOVE BURRS AND BREAK SHARP EDGES .005 - .015

THREADS PER HANDBOOK H-28

DIMENSIONS ARE SHOWN AFTER PLATING

3rd ANGLE PROJ.



ANGLE:
± 1/2°

CHAMFER:
± 5°

TOLERANCE:
.X ± 0.1"
.XX ± 0.01"
.XXX ± 0.005"

FUTEK

This drawing, including all information depicted herein (collectively, "Drawing"), is FUTEK's property and protected under applicable law, including copyright. FUTEK reserves all rights. The Drawing is provided solely for your information and exclusive use. Except as expressly approved by FUTEK in writing, you may not reproduce or share this Drawing in whole or part with any other firm or individual, or attempt to reverse engineer the Drawing or data contained therein. Any reproduction of this Drawing in whole or part must include this legend.

MODEL: **QLA349** DWG No.: **FO1290**

DRAWN BY: *R. Walker* CREATED DATE: *4/1/2011*

APPROVED BY: APPROVED DATE:

CHECKED BY: *J. Vargas* CAGE: 1X8M6 SHEET: 1 OF 1