

## Terms and Conditions of Use

This drawing, including all information depicted herein (collectively, "Drawing"), is FUTEK's property and protected under applicable law, including copyright. FUTEK reserves all rights. The Drawing is provided solely for your information and exclusive use. **Except as expressly approved by FUTEK in writing, you may not reproduce or share this Drawing**, in whole or part, with any other firm or individual, or attempt to reverse engineer the Drawing or data contained therein. Any reproduction of this Drawing in whole or part must include this legend.

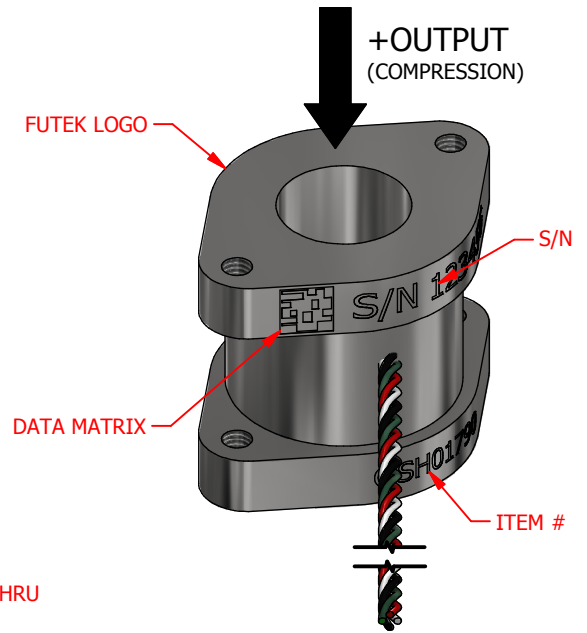
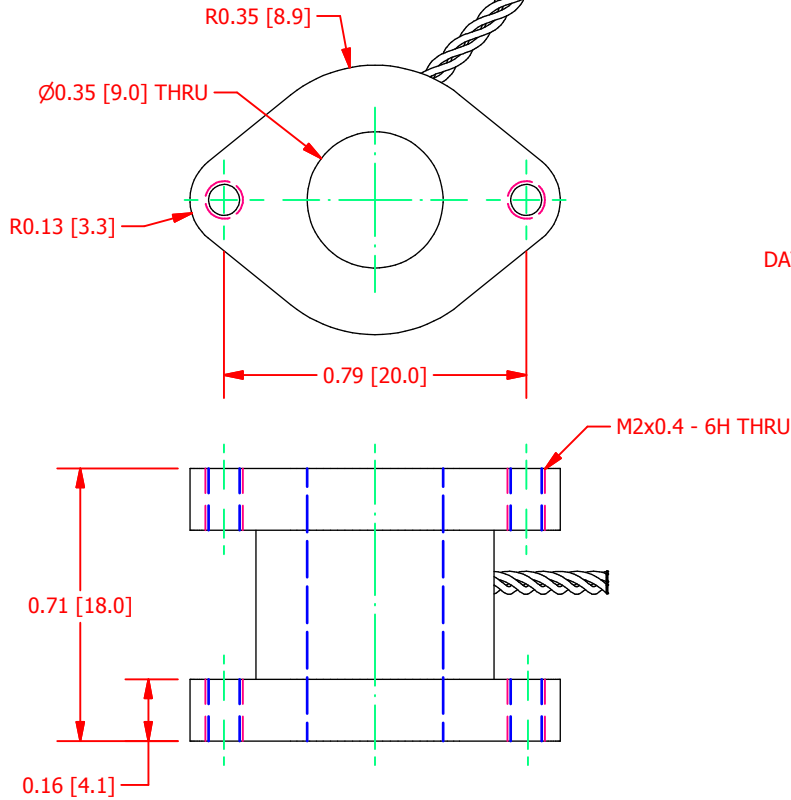
By accessing the Drawing, you agree that you have read, understand, and agree to abide by the stated Terms and Conditions of Use.

© 2023 FUTEK Advanced Sensor Technology, Inc.

# FUTEK MODEL QLA384 Custom Compression Flange Mount Load Cell

ITEM NUMBER: QSH01790

INCH [mm]		R.O. = Rated Output	
WIRING CODE (WC 1)			
+Excitation	-Excitation	+Signal	-Signal
RED	BLACK	GREEN	WHITE



**SPECIFICATIONS:**

RATED OUTPUT	2.5 mV/V nom.
CAPACITY	100 lb [444.8N]
SAFE OVERLOAD	150 % of R.O.
ZERO BALANCE	±3% of R.O.
EXCITATION (VDC OR VAC)	10 MAX
BRIDGE RESISTANCE	700 Ω nom.
NONLINEARITY	±0.25% of R.O.
HYSTERESIS	±0.25% of R.O.
NONREPEATABILITY	±0.1% of R.O.
TEMP. SHIFT ZERO	±0.02% of R.O./°F (±0.036 of R.O./°C)
TEMP. SHIFT SPAN	±0.02% of LOAD/°F (±0.036 of LOAD/°C)
COMPENSATED TEMP.	60 to 160 °F (16 to 71 °C)
OPERATING TEMP	-60 to 200 °F (-51 to 93 °C)
WEIGHT (approx)	0.04 lb [18.1 g]
MATERIAL	17-4 PH S.S.
DEFLECTION	0.002 [0.050] nom.
CABLE: #29 Awg 4 Conductor Spiral Teflon Cable, 6 in [0.15 m] Long	
CALIBRATION TEST EXCITATION	5 VDC
CALIBRATION (STD)	5 pt. COMPRESSION

Preliminary Drawing

CUSTOMER APPROVAL- COMPANY:	OUTLINE DRAWING	<div style="display: flex; justify-content: space-between;"> <div style="width: 60%;"> <p><small>STANDARD NOTES: (Unless Otherwise Specified)</small></p> <p>ALL DIMENSIONS ARE IN INCHES</p> <p>DRAWING INTERPRETATION DIMS. PER ASME-Y14.5M</p> <p>REMOVE BURRS AND BREAK SHARP EDGES .005 - .015</p> <p>THREADS PER HANDBOOK H-28</p> <p>DIMENSIONS ARE SHOWN AFTER PLATING</p> </div> <div style="width: 35%; font-size: 10px;"> <p>ANGLE: ± 1/2°</p> <p>CHAMFER: ± 5°</p> <p>TOLERANCE:  .X ± 0.1"  .XX ± 0.01"  .XXX ± 0.005"</p> </div> </div> <div style="text-align: center; margin-top: 10px;"> <p>3rd ANGLE PROJ.</p> </div>
CUSTOMER APPROVAL- NAME / DATE:		<div style="display: flex; justify-content: space-between;"> <div style="width: 60%;"> <p><b>FUTEK</b></p> <p>MODEL: <b>QLA384</b></p> <p>DRAWN BY: M. Lisiak</p> <p>APPROVED BY: _____</p> <p>CHECKED BY: _____</p> </div> <div style="width: 35%; font-size: 10px;"> <p><small>This drawing, including all information depicted herein (collectively, "Drawing"), is FUTEK's property and protected under applicable law, including copyright. FUTEK reserves all rights. The Drawing is provided solely for your information and exclusive use. Except as expressly approved by FUTEK in writing, you may not reproduce or share this Drawing in whole or part, with any other firm or individual, or attempt to reverse engineer the Drawing or data contained therein. Any reproduction of this Drawing in whole or part must include this legend.</small></p> <p>DWG No.: <b>FO1388</b></p> <p>CREATED DATE: 3/30/2015</p> <p>APPROVED DATE: _____</p> <p>CAGE: 1X8M6 SHEET: 1 OF 1</p> </div> </div>
REVISIONS: (Refer to dwg # revision sheet)		