

Terms and Conditions of Use

This drawing, including all information depicted herein (collectively, "Drawing"), is FUTEK's property and protected under applicable law, including copyright. FUTEK reserves all rights. The Drawing is provided solely for your information and exclusive use. **Except as expressly approved by FUTEK in writing, you may not reproduce or share this Drawing**, in whole or part, with any other firm or individual, or attempt to reverse engineer the Drawing or data contained therein. Any reproduction of this Drawing in whole or part must include this legend.

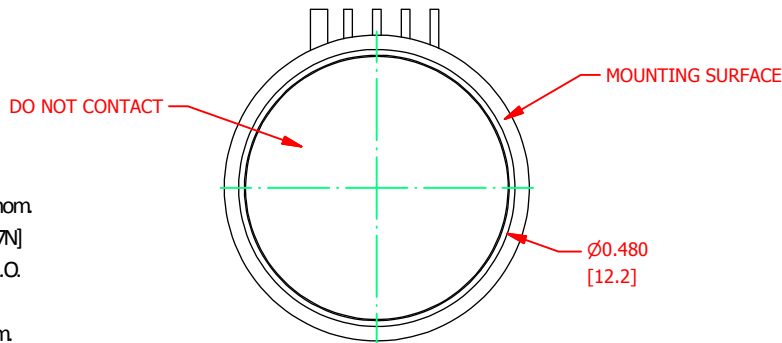
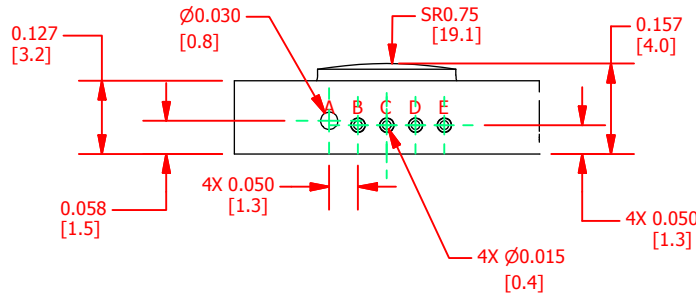
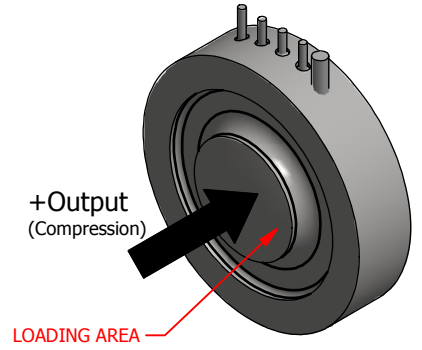
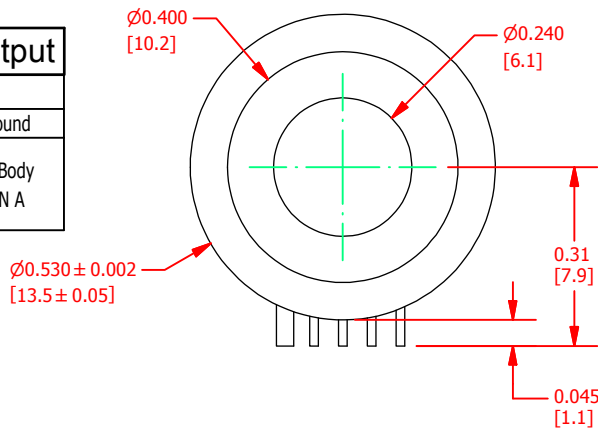
By accessing the Drawing, you agree that you have read, understand, and agree to abide by the stated Terms and Conditions of Use.

© 2023 FUTEK Advanced Sensor Technology, Inc.

FUTEK MODEL QLA402 Custom Autoclavable Load Button Load Cell

ITEM NUMBER: N/A

INCH [mm]		R.O. = Rated Output		
WIRING CODE				
+ Excitati	- Excitation	+ Signal	- Signal	Ground
RED PIN C	BLACK PIN E	GREEN PIN B	WHITE PIN D	To Body PIN A



SPECIFICATIONS:

RATED OUTPUT	1.5mV/V nom
CAPACITY	175lb. [777N]
SAFE OVERLOAD	150% of R.O.
EXCITATION (VDC OR VAC)	10V MAX
BRIDGE RESISTANCE	1000Ω nom
NONLINEARITY	±1% of R.O.
HYSTERESIS	±1% of R.O.
NONREPEATABILITY	±0.25% of R.O.
TEMP. SHIFT ZERO	±0.02% of R.O./°F (±0.036 of R.O./°C)
TEMP. SHIFT SPAN	±0.02% of LOAD/°F (±0.036 of LOAD/°C)
COMPENSATED TEMP.	59 to 104 °F (15 to 40°C)
OPERATING TEMP	59 to 104 °F (15 to 40°C)
NON OPERATING TEMP	32 to 279 °F (0 to 137°C)
MATERIAL	INCONEL
DEFLECTION	0.0005 [0.013] nom
PIN HEADER: PLATING- GOLD 0.00005" OVER NICKEL 0.0002", Ground Pin NICKEL ONLY	
PRESSURE	34 PSI MAX
STERILIZATION	CAPABLE OF SURVIVING HUNDREDS OF STERILIZATION CYCLES
CE	RoHS 2011/65/EU

PROPRIETARY DESIGN

CUSTOMER APPROVAL- COMPANY:

OUTLINE DRAWING

FUTEK

This drawing, including all information depicted herein (collectively, "Drawing"), is FUTEK's property and protected under applicable law, including copyright. FUTEK reserves all rights. The Drawing is provided solely for your information and exclusive use. Except as expressly approved by FUTEK in writing, you may not reproduce or share this Drawing in whole or part, with any other firm or individual, or attempt to reverse engineer the Drawing or data contained therein. Any reproduction of this Drawing in whole or part must include this legend.

CUSTOMER APPROVAL- NAME / DATE:

STANDARD NOTES: (Unless Otherwise Specified)

REVISIONS: (Refer to dwg # revision sheet)

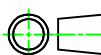
ALL DIMENSIONS ARE IN INCHES
DRAWING INTERPRETATION DIMS. PER ASME-Y14.5M
REMOVE BURRS AND BREAK SHARP EDGES .005 - .015
THREADS PER HANDBOOK H-28
DIMENSIONS ARE SHOWN AFTER PLATING

ANGLE:
± 1/2°

CHAMFER:
± 5°

TOLERANCE:
.X ± 0.1"
.XX ± 0.01"
.XXX ± 0.005"

3rd ANGLE PROJ.



MODEL: **QLA402**

DWG No.: **FO1448**

DRAWN BY: M. Lisiak

CREATED DATE: 2/10/2017

APPROVED BY: R. Walker

APPROVED DATE: 10/13/2017

CHECKED BY:

CAGE: 1X8M6 SHEET: 1 OF 1