

Terms and Conditions of Use

This drawing, including all information depicted herein (collectively, "Drawing"), is FUTEK's property and protected under applicable law, including copyright. FUTEK reserves all rights. The Drawing is provided solely for your information and exclusive use. **Except as expressly approved by FUTEK in writing, you may not reproduce or share this Drawing**, in whole or part, with any other firm or individual, or attempt to reverse engineer the Drawing or data contained therein. Any reproduction of this Drawing in whole or part must include this legend.

By accessing the Drawing, you agree that you have read, understand, and agree to abide by the stated Terms and Conditions of Use.

© 2023 FUTEK Advanced Sensor Technology, Inc.

FUTEK MODEL QLA420 BEEFCAKE SENSOR WITH SPI OUTPUT

ITEM NUMBER: QSH02129

INCH [mm] R.O.= Rated Output

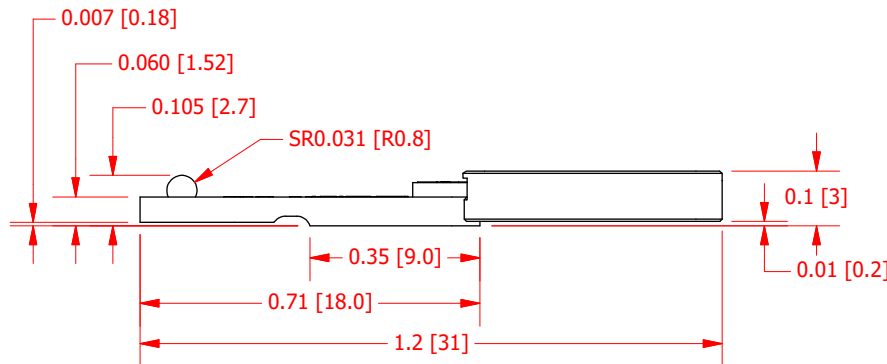
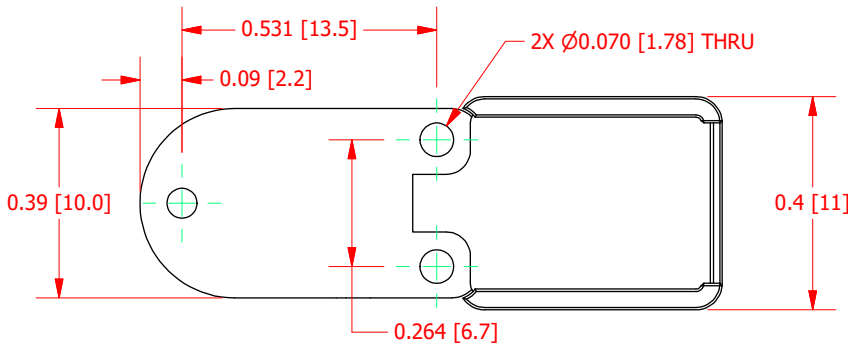
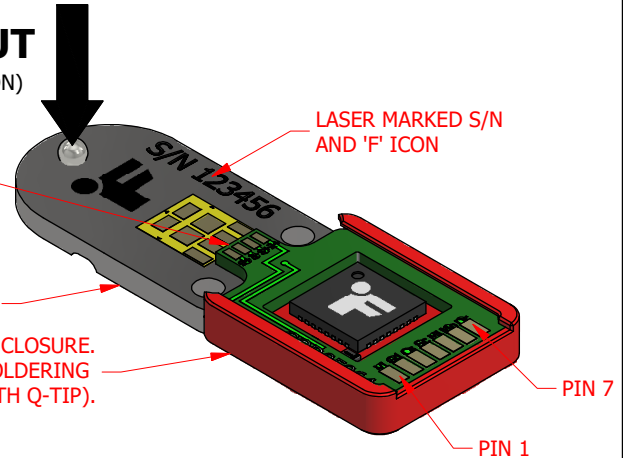
PINOUT	
#	FUNCTION
1	VIN
2	GND
3	SPI.CS
4	SPI.SCLK
5	SPI.MISO
6	SPI.MOSI
7	SPI.DRDY

+OUTPUT
(COMPRESSION)

DELICATE INSTRUMENTATION
-DO NOT CONTACT

SUPPORT MOUNTING SURFACE

CAUTION: PROTOTYPES PROVIDED WITH 3D PRINTED ENCLOSURE.
LIMITED CHEMICAL EXPOSURE TO FLUX/DE-FLEX DURING SOLDERING
RECOMMENDED (NON SPRAY, LOCALLY APPLY WITH Q-TIP).



Preliminary Drawing

SPECIFICATIONS:

CAPACITY	30 lb. [133.2N]
SAFE OVERLOAD	300 % of R.O.
NONLINEARITY	±5% of R.O.
TEMP. SHIFT ZERO	±0.01% of R.O./°F (±0.018 of R.O./°C)
COMPENSATED TEMP. (SENSOR)	60 to 160 °F (16 to 71 °C)
OPERATING TEMP	-60 to 149 °F (-51 to 65 °C)
WEIGHT (approx)	0.01 lb [2.3 g]
MATERIAL (SENSOR)	17-4 PH S.S.
DEFLECTION	0.005 [0.13] nom.
POWER	3.3 to 5 VDC

DIRECTION 1

Command-Set Name	Calibration Point	Load (lb)
GD1CP0	Zero	0
GD1CP1	1	6
GD1CP2	2	12
GD1CP3	3	18
GD1CP4	4	24
GD1CP5	5	30

SPI COMMAND SET

This drawing, including all information depicted herein (collectively, "Drawing"), is FUTEK's property and protected under applicable law, including copyright. FUTEK reserves all rights. The Drawing is provided solely for your information and exclusive use. **Except as expressly approved by FUTEK in writing, you may not reproduce or share this Drawing** in whole or part, with any other firm or individual, or attempt to reverse engineer the Drawing or data contained therein. Any reproduction of this Drawing in whole or part must include this legend.

FUTEK

MODEL: QLA420	DWG No.: FO1528
DRAWN BY: M. Lisiak	CREATED DATE: 3/10/2020
APPROVED BY: _____	APPROVED DATE:
CHECKED BY:	CAGE: 1X8M6 SHEET: 1 OF 1

CUSTOMER APPROVAL- COMPANY:

CUSTOMER APPROVAL- NAME / DATE:

REVISIONS: (Refer to dwg # revision sheet)

OUTLINE DRAWING

STANDARD NOTES: (Unless Otherwise Specified)

ALL DIMENSIONS ARE IN INCHES
DRAWING INTERPRETATION DIMS. PER ASME-Y14.5
REMOVE BURRS AND BREAK SHARP EDGES .005 - .015
THREADS PER HANDBOOK H-28
DIMENSIONS ARE SHOWN AFTER PLATING

ANGLE:
± 1/2°

CHAMFER:
± 5°

TOLERANCE:
.X ± 0.1"
.XX ± 0.01"
.XXX ± 0.005"

3rd ANGLE PROJ.

