

Terms and Conditions of Use

This drawing, including all information depicted herein (collectively, "Drawing"), is FUTEK's property and protected under applicable law, including copyright. FUTEK reserves all rights. The Drawing is provided solely for your information and exclusive use. **Except as expressly approved by FUTEK in writing, you may not reproduce or share this Drawing**, in whole or part, with any other firm or individual, or attempt to reverse engineer the Drawing or data contained therein. Any reproduction of this Drawing in whole or part must include this legend.

By accessing the Drawing, you agree that you have read, understand, and agree to abide by the stated Terms and Conditions of Use.

© 2023 FUTEK Advanced Sensor Technology, Inc.

FUTEK MODEL QMA147

Custom Tri-Axial Bending Beam Load Cell with M2.5 Mounting

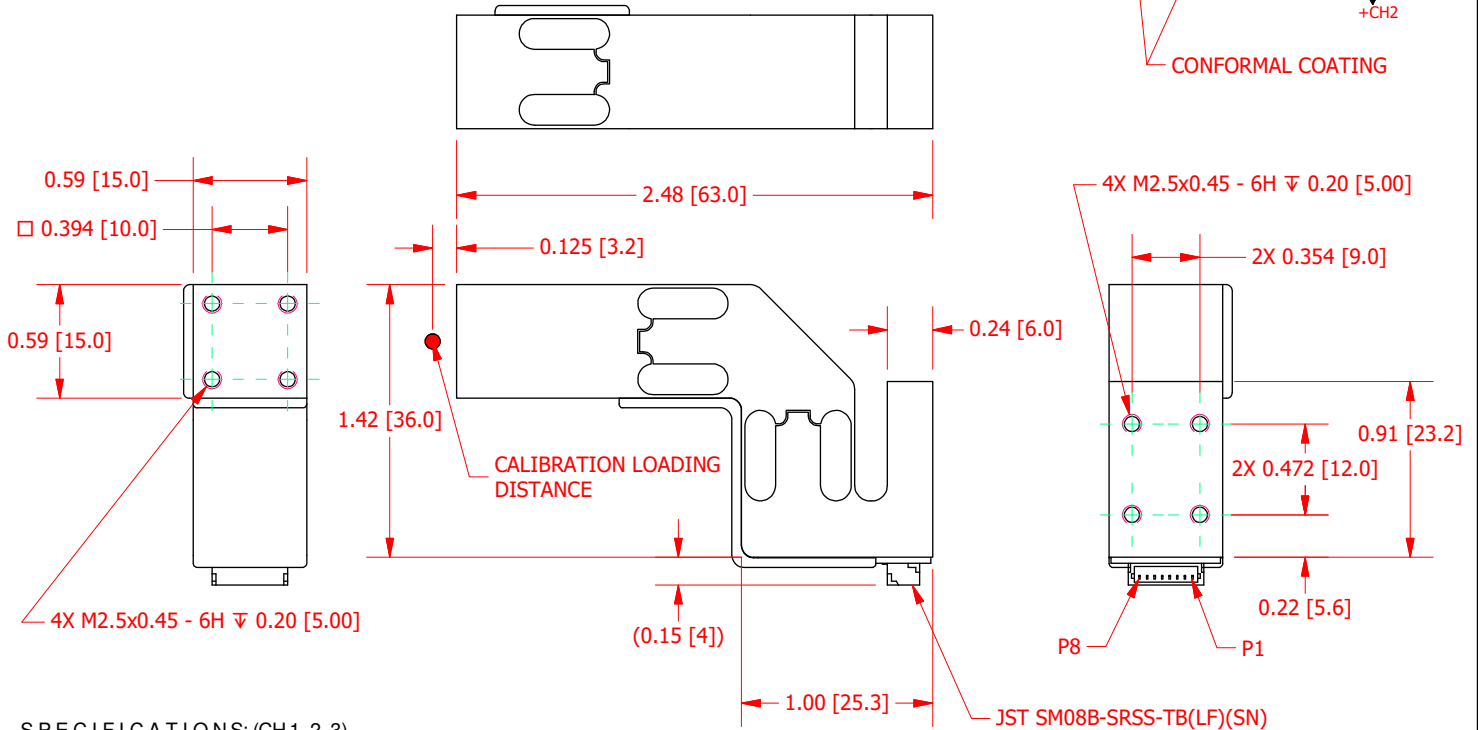
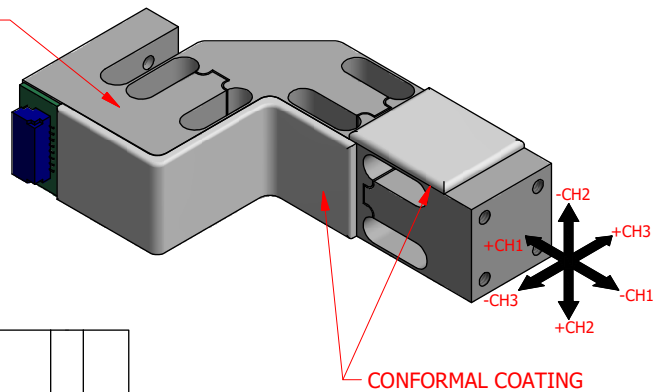
ITEM NUMBER: QSH02080

INCH [mm] | R.O.= Rated Output

WIRING CODE

+ Excitation	- Excitation	CH1 +Signal	CH1 -Signal
P1	P2	P3	P4
CH2 +Signal	CH2 -Signal	CH3 +Signal	CH3 -Signal
P5	P6	P7	P8

LASER MARKED ITEM # & S/N



SPECIFICATIONS: (CH1, 2, 3)

RATED OUTPUT	1.5 mV/V nom.
CAPACITY	5 lb. [22.2N]
SAFE OVERLOAD	500 % of R.O.
ZERO BALANCE	±5% of R.O.
EXCITATION (VDC OR VAC)	15 MAX
BRIDGE RESISTANCE	117/350 Ω nom.
NONLINEARITY	±0.25% of R.O.
HYSTERESIS	±0.25% of R.O.
NONREPEATABILITY	±0.1% of R.O.
TEMP. SHIFT ZERO	±0.01% of R.O./°F (±0.018 of R.O./°C)
COMPENSATED TEMP.	60 to 160 °F (16 to 71 °C)
OPERATING TEMP	0 to 180 °F (-18 to 82 °C)
MATERIAL	CLEAR ANODIZED ALUMINUM
CONNECTOR-	8 POSITION JST SM08B-SRSS-TB(LF)(SN)

CUSTOMER APPROVAL- COMPANY:

CUSTOMER APPROVAL- NAME / DATE:

REVISIONS: (Refer to dwg # revision sheet)

OUTLINE DRAWING

STANDARD NOTES: (Unless Otherwise Specified)

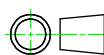
ALL DIMENSIONS ARE IN INCHES
DRAWING INTERPRETATION DIMS. PER ASME-Y14.5
REMOVE BURRS AND BREAK SHARP EDGES .005 - .015
THREADS PER HANDBOOK H-28
DIMENSIONS ARE SHOWN AFTER PLATING

ANGLE:
± 1/2°

CHAMFER:
± 5°

TOLERANCE:
.X ± 0.1"
.XX ± 0.01"
.XXX ± 0.005"

3rd ANGLE PROJ.



FUTEK

This drawing, including all information depicted herein (collectively, "Drawing"), is FUTEK's property and protected under applicable law, including copyright. FUTEK reserves all rights. The Drawing is provided solely for your information and exclusive use. Except as expressly approved by FUTEK in writing, you may not reproduce or share this Drawing, in whole or part with any other firm or individual, or attempt to reverse engineer the Drawing or data contained therein. Any reproduction of this Drawing in whole or part must include this legend.

MODEL: **QMA147**

DWG No.: **FO1501**

DRAWN BY: *R. Walker*

CREATED DATE: *7/16/2019*

APPROVED BY: *S. Michel*

APPROVED DATE: *7/17/2019*

CHECKED BY:

CAGE: 1X8M6 SHEET: 1 OF 1