

Terms and Conditions of Use

This drawing, including all information depicted herein (collectively, "Drawing"), is FUTEK's property and protected under applicable law, including copyright. FUTEK reserves all rights. The Drawing is provided solely for your information and exclusive use. **Except as expressly approved by FUTEK in writing, you may not reproduce or share this Drawing**, in whole or part, with any other firm or individual, or attempt to reverse engineer the Drawing or data contained therein. Any reproduction of this Drawing in whole or part must include this legend.

By accessing the Drawing, you agree that you have read, understand, and agree to abide by the stated Terms and Conditions of Use.

© 2023 FUTEK Advanced Sensor Technology, Inc.

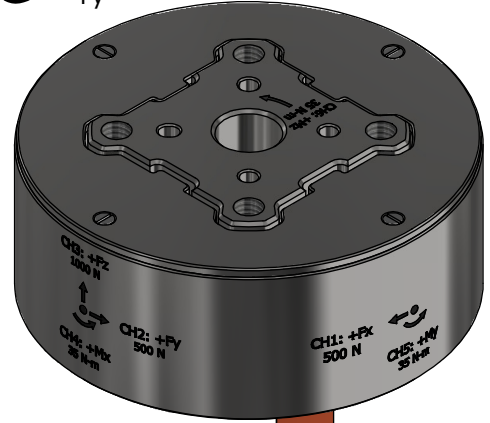
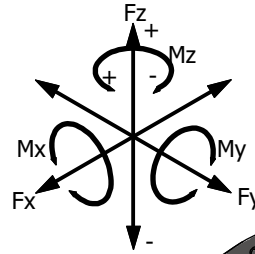
FUTEK MODEL QMA149

CUSTOM 6 DEGREE OF FREEDOM SENSOR WITH SPI OUTPUT

ITEM NUMBER: QSH02132

INCH [mm] | R.O.= Rated Output

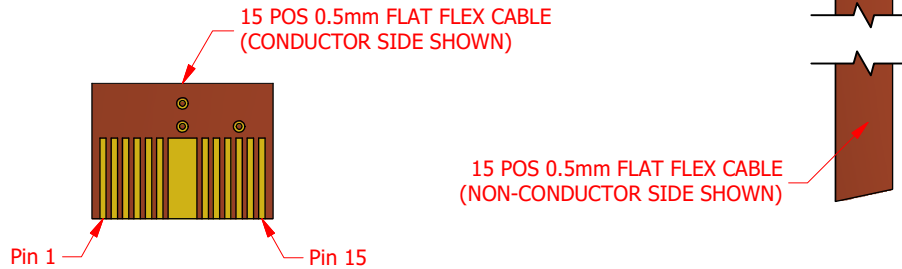
Specifications	ADC1	ADC2	ADC3	ADC4	ADC5	ADC6
Force/Torque	Fx	Fy	Fz	Mx	My	Mz
Full Scale Load	500 N	500 N	1000 N	35 N-m	35 N-m	35 N-m
Safe Overload	2000 N	2000 N	4000 N	140 N-m	140 N-m	140 N-m



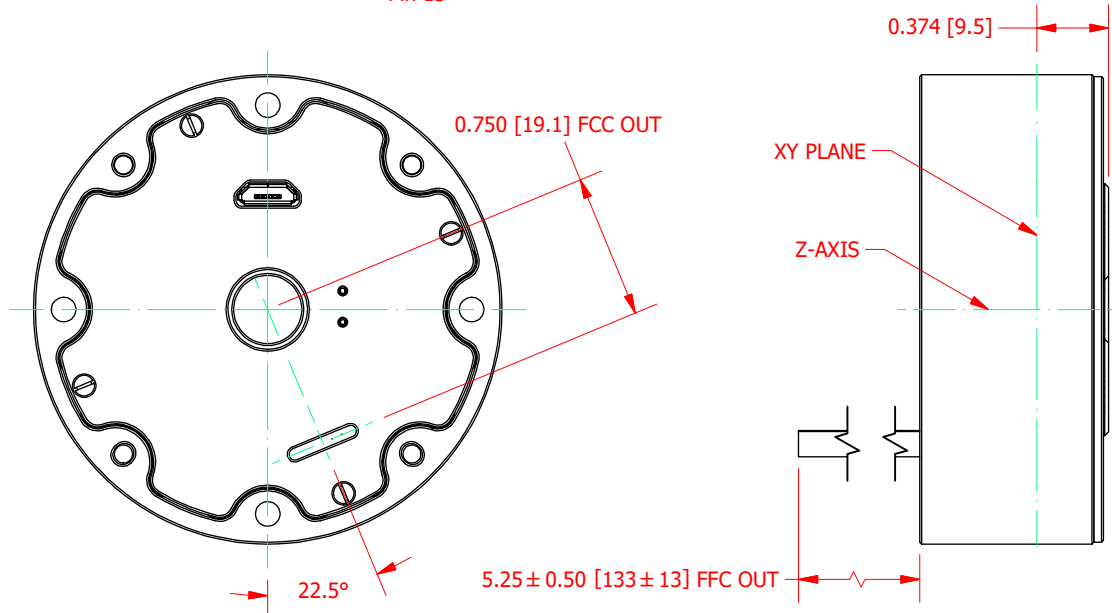
SPECIFICATIONS:

CAPACITY	SEE CHART
SAFE OVERLOAD	SEE CHART
NONLINEARITY	±0.25% of R.O.
HYSTERESIS	±0.25% of R.O.
NONREPEATABILITY	±0.01% of R.O.
COMPENSATED TEMP.	68 to 131 °F (20 to 55 °C)
OPERATING TEMP	24.8 to 185 °F (-4 to 85 °C)
WEIGHT (approx)	0.82 lb [372 g]
MATERIAL	17-4 PH S.S.
CABLE: 15 PIN 0.5mm PITCH FLAT FLEX CABLE, 5.25" [133]	
POWER CONSUMPTION	300mW
Vin	5VDC ±10%
SAMPLING	2.5 - 750 SPS

SEE CHART
SEE CHART
±0.25% of R.O.
±0.25% of R.O.
±0.01% of R.O.
68 to 131 °F (20 to 55 °C)
24.8 to 185 °F (-4 to 85 °C)
0.82 lb [372 g]
17-4 PH S.S.
15 PIN 0.5mm PITCH FLAT FLEX CABLE, 5.25" [133]
300mW
5VDC ±10%
2.5 - 750 SPS



PINOUT	
PIN #	PIN FUNCTION
1	TRIGGER
2	SPI.DRDY
3	SPI.CS
4	SPI.SCLK
5	SPI.MOSI
6	SPI.MISO
7	GND
8	GND
9	GND
10	VIN
11	NC
12	NC
13	NC
14	NC
15	NC



CUSTOMER APPROVAL- COMPANY:	
CUSTOMER APPROVAL- NAME / DATE:	
REVISIONS: (Refer to dwg # revision sheet)	
A	9/23/2020

OUTLINE DRAWING

STANDARD NOTES: (Unless Otherwise Specified)

ALL DIMENSIONS ARE IN INCHES
DRAWING INTERPRETATION DIMS. PER ASME-Y14.5
REMOVE BURRS AND BREAK SHARP EDGES .005 - .015
THREADS PER HANDBOOK H-28
DIMENSIONS ARE SHOWN AFTER PLATING

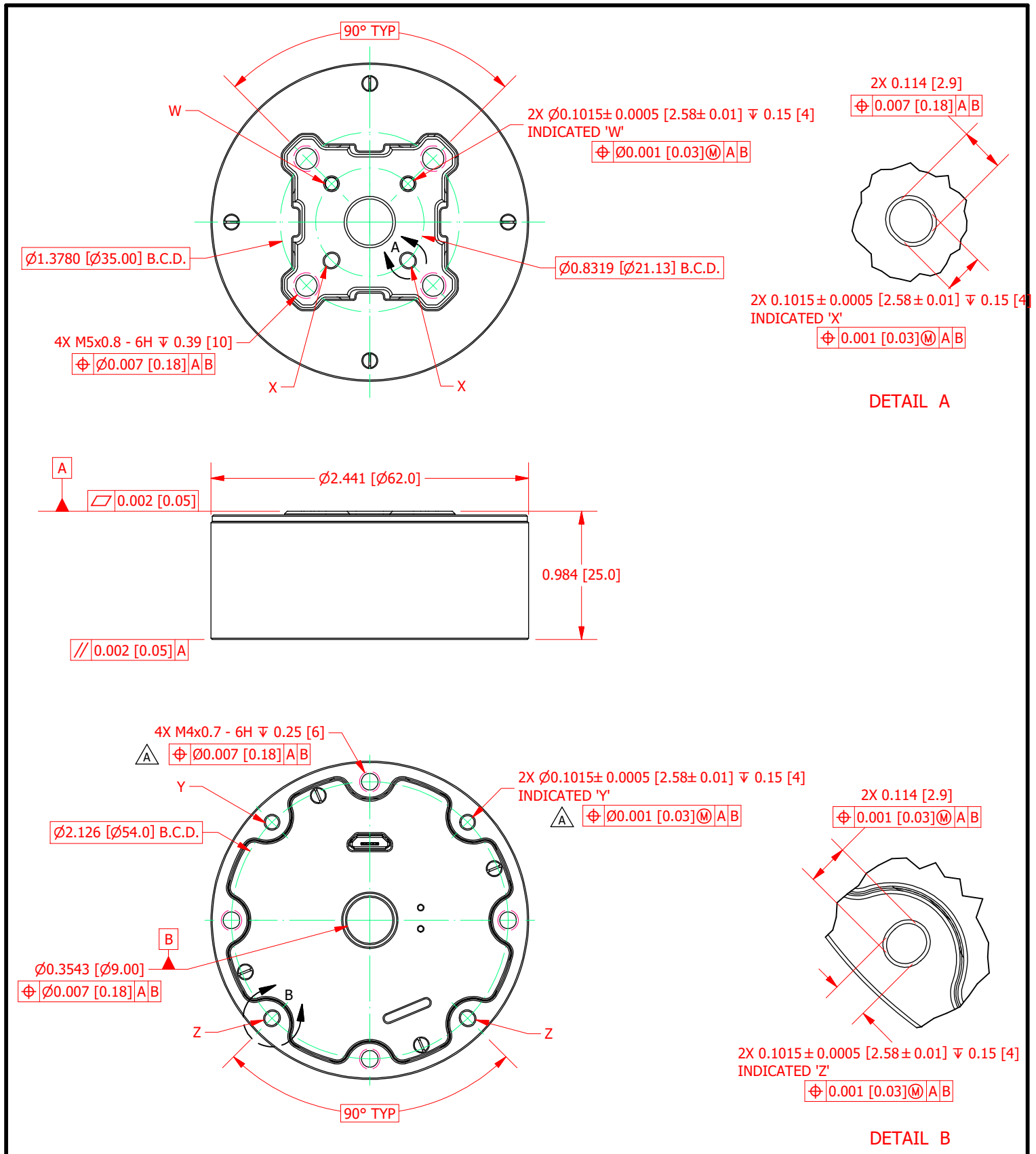
ANGLE: ± 1/2°
CHAMFER: ± 5°
TOLERANCE:
.X ± 0.1"
.XX ± 0.01"
.XXX ± 0.005"

3rd ANGLE PROJ.

This drawing, including all information depicted herein (collectively, "Drawing"), is FUTEK's property and protected under applicable law, including copyright. FUTEK reserves all rights. The Drawing is provided solely for your information and exclusive use. Except as expressly approved by FUTEK in writing, you may not reproduce or share this Drawing, in whole or part, with any other firm or individual, or attempt to reverse engineer the Drawing or data contained therein. Any reproduction of this Drawing in whole or part must include this legend.

FUTEK

MODEL: QMA149	DWG No.: FO1527-A
DRAWN BY: G. ZINZUN	CREATED DATE: 2/26/2020
APPROVED BY: J. PARK	APPROVED DATE: 3/2/2020
CHECKED BY: F. ALLAHAKBARI	CAGE: 1X8M6 SHEET: 1 OF 3



CUSTOMER APPROVAL- COMPANY:
CUSTOMER APPROVAL- NAME / DATE:
REVISIONS: (Refer to dwg # revision sheet)

OUTLINE DRAWING

STANDARD NOTES: (Unless Otherwise Specified)

ALL DIMENSIONS ARE IN INCHES
DRAWING INTERPRETATION DIMS. PER ASME-Y14.5
REMOVE BURRS AND BREAK SHARP EDGES .005 - .015
THREADS PER HANDBOOK H-28
DIMENSIONS ARE SHOWN AFTER PLATING

ANGLE:
± 1/2°

CHAMFER:
± 5°

TOLERANCE:
.X ± 0.1"
.XX ± 0.01"
.XXX ± 0.005"

3rd ANGLE PROJ.

This drawing, including all information depicted herein (collectively, "Drawing"), is FUTEK's property and protected under applicable law, including copyright. FUTEK reserves all rights. The Drawing is provided solely for your information and exclusive use. Except as expressly approved by FUTEK in writing, you may not reproduce or share this Drawing, in whole or part, with any other firm or individual, or attempt to reverse engineer the Drawing or data contained therein. Any reproduction of this Drawing in whole or part must include this legend.

FUTEK

MODEL: <b style="color: green; font-size: 1.2em;">QMA149	DWG No.: <b style="color: green; font-size: 1.2em;">FO1527-A
DRAWN BY: G. ZINZUN	CREATED DATE: 2/26/2020
APPROVED BY: J. PARK	APPROVED DATE: 3/2/2020
CHECKED BY: F. ALLAHAKBARI	CAGE: 1X8M6 SHEET: 2 OF 3



Command-Set Name	Direction 1	Fx: ADC1	Fy: ADC2	Fz: ADC3	Mx: ADC4	My: ADC5	Mz: ADC6
		Tension (+)			Counter-Clockwise (+)		
	Load Point	Load (N)			Load (N-m)		
GD1CP0	Zero	0		0	0		
GD1CP1	1	99.64		200.16	7.00506		
GD1CP2	2	199.28		400.32	14.01012		
GD1CP3	3	298.92		600.48	21.01518		
GD1CP4	4	398.56		800.64	28.02024		
GD1CP5	5	498.2		1000.8	35.0253		



Command-Set Name	Direction 2	Fx: ADC1	Fy: ADC2	Fz: ADC3	Mx: ADC4	My: ADC5	Mz: ADC6
		Compression (-)			Clockwise (-)		
	Load Point	Load (N)			Load (N-m)		
GD2CP0	Zero	0		0	0		
GD2CP1	1	99.64		200.16	7.00506		
GD2CP2	2	199.28		400.32	14.01012		
GD2CP3	3	298.92		600.48	21.01518		
GD2CP4	4	398.56		800.64	28.02024		
GD2CP5	5	498.2		1000.8	35.0253		

CUSTOMER APPROVAL- COMPANY:

OUTLINE DRAWING

FUTEK

This drawing, including all information depicted herein (collectively, "Drawing"), is FUTEK's property and protected under applicable law, including copyright. FUTEK reserves all rights. The Drawing is provided solely for your information and exclusive use. Except as expressly approved by FUTEK in writing, you may not reproduce or share this Drawing, in whole or part, with any other firm or individual, or attempt to reverse engineer the Drawing or data contained therein. Any reproduction of this Drawing in whole or part must include this legend.

CUSTOMER APPROVAL- NAME / DATE:

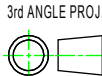
STANDARD NOTES: (Unless Otherwise Specified)

ALL DIMENSIONS ARE IN INCHES
 DRAWING INTERPRETATION DIMS. PER ASME-Y14.5
 REMOVE BURRS AND BREAK SHARP EDGES .005 - .015
 THREADS PER HANDBOOK H-28
 DIMENSIONS ARE SHOWN AFTER PLATING

ANGLE:
± 1/2°

CHAMFER:
± 5°

TOLERANCE:
.X ± 0.1"
.XX ± 0.01"
.XXX ± 0.005"



MODEL: QMA149	DWG No.: FO1527-A
DRAWN BY: G. ZINZUN	CREATED DATE: 2/26/2020
APPROVED BY: J. PARK	APPROVED DATE: 3/2/2020
CHECKED BY: F. ALLAHAKBARI	CAGE: 1X8M6 SHEET: 3 OF 3

REVISIONS: (Refer to dwg # revision sheet)