

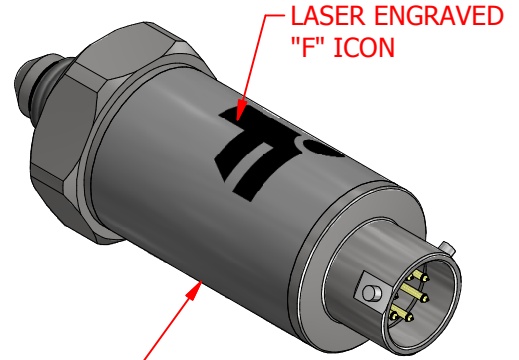
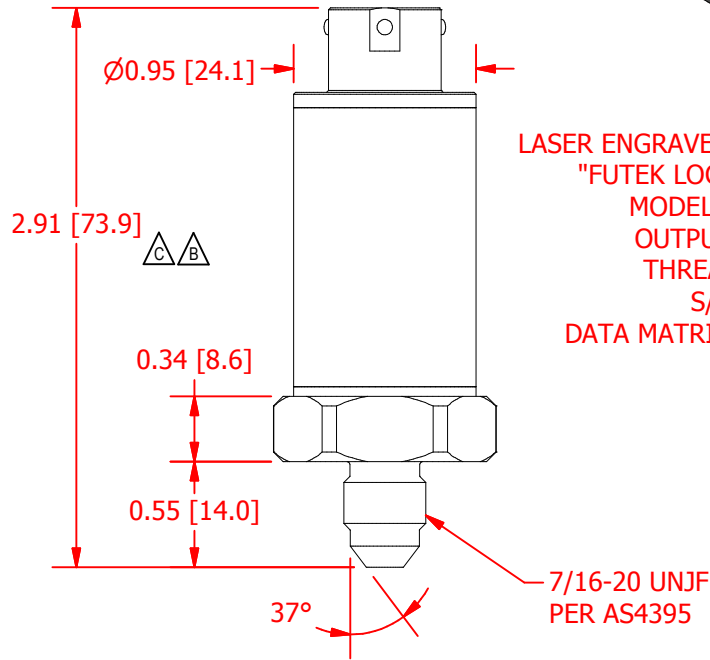
FUTEK MODEL QPA113

CUSTOM PRESSURE SENSOR WITH SAE AS4395 MALE FITTING

ITEM NUMBER: SEE CHART

INCH [mm]	R.O.= Rated Output		
WIRING CODE			
Power Supply (+)	Voltage Output (+)	Ground (-)	Ground (-)
PIN A	PIN D	PIN B*	PIN C*

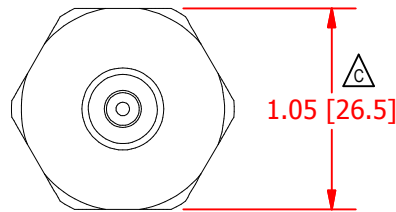
*INTERNALLY CONNECTED



LASER ENGRAVED:
"FUTEK LOGO
MODEL #
OUTPUT
THREAD
S/N
DATA MATRIX"

SPECIFICATIONS:

RATED OUTPUT	10 VDC nom.
CAPACITY	SEE CHART
SAFE OVERLOAD	150% of Capacity
BURST PRESSURE	300% of Capacity
ZERO BALANCE	$\triangle C$ 0.1 to 0.25 VDC
POWER SUPPLY	13 - 28 VDC
BANDWIDTH	1000 Hz
NONLINEARITY	$\triangle C$ $\pm 0.25\%$ of R.O. (End Point)
HYSTERESIS	$\pm 0.25\%$ of R.O.
NONREPEATABILITY	$\triangle B$ $\pm 0.10\%$ of R.O.
TEMP. SHIFT ZERO	$\pm 0.01\%$ of R.O./°F (± 0.018 of R.O./°C)
TEMP. SHIFT SPAN	$\pm 0.01\%$ of LOAD/°F (± 0.018 of LOAD/°C)
COMPENSATED TEMP.	60 to 160 °F (16 to 71 °C)
OPERATING TEMP	-40 to 185 °F (-40 to 85 °C)
IP RATING	IP65
MATERIAL	Stainless Steel
CONNECTOR:	6 Pin Mil Plug (PT02H-10-6P style)



ITEM#	CAPACITY [PSI]
QSH01720	1000
QSH01721	5000

NOTES:

- 1) ASSEMBLY IS FULLY SEALED AND PROTECTED AGAINST SKYDROL.
- 2) REVERSE POLARITY, OVERVOLTAGE AND SHORT CIRCUIT PROTECTED.

CUSTOMER APPROVAL- COMPANY:

CUSTOMER APPROVAL- NAME / DATE:

REVISIONS: (Refer to dwg # revision sheet)

A	4/12/2011
B	2/26/2014
C	11/21/2017

OUTLINE DRAWING

STANDARD NOTES: (Unless Otherwise Specified)

ALL DIMENSIONS ARE IN INCHES
DRAWING INTERPRETATION DIMS. PER ASME-Y14.5M
REMOVE BURRS AND BREAK SHARP EDGES .005 - .015
THREADS PER HANDBOOK H-28
DIMENSIONS ARE SHOWN AFTER PLATING

ANGLE:
 $\pm 1/2^\circ$

CHAMFER:
 $\pm 5^\circ$

TOLERANCE:
.X ± 0.1 "
.XX ± 0.01 "
.XXX ± 0.005 "



This drawing is submitted solely for the information and exclusive use of the original addressee. It is not to be divulged in whole or in part, by any firm or individual without written permission from:

FUTEK
ADVANCED SENSOR TECHNOLOGY, INC.
10 THOMAS, IRVINE, CA 92618 USA
Phone: (949) 465-0900
Fax: (949) 465-0905

MODEL: QPA113	DWG No.: F01287-C
DRAWN BY: T. LEE	CREATED DATE: 3/14/2011
APPROVED BY: R. Walker	APPROVED DATE: 3/16/2011
CHECKED BY:	CAGE: 1X8M6 SHEET: 1 OF 1