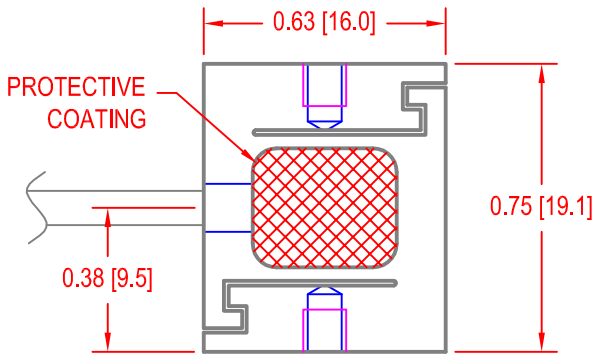
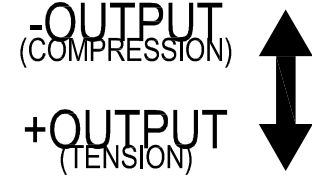
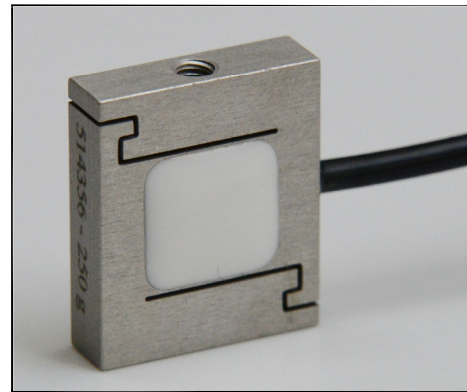
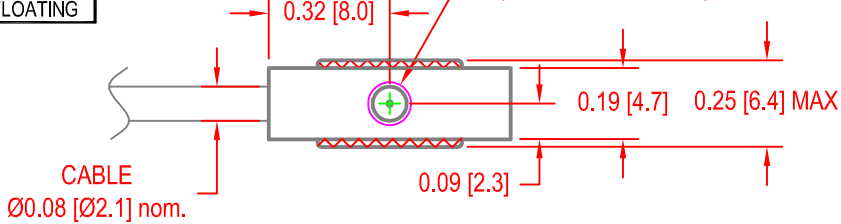


FUTEK MODEL LSB210

SUBMERSIBLE S-BEAM JUNIOR LOAD CELL

Drawing Number: FI1318-A			
INCH [mm]		R.O.= Rated Output	
WIRING CODE			
+Excitation	-Excitation	+Signal	-Signal
RED	BLACK	GREEN	WHITE
Shield			
FLOATING			

2 X #4-40-2B X
0.110 [2.8] DEEP
(M3X0.5 AVAILABLE)



ITEM #	CAPACITIES		RATED OUTPUT	NON-LINEARITY	HYSTERESIS	ZERO RETURN	CREEP 10 mins.	MATERIAL	SHUNT CAL. VALUE
	lb	N							
QSH00618	100g	1	1 mV/V nom.	3%R.O.	5%R.O.	3%R.O.	12%R.O.	CLEAR ANODIZED ALUMINUM	100K Ω
QSH00539	250g	2.5	2 mV/V nom.	2%R.O.	3%R.O.	2%R.O.	5%R.O.		60.4K Ω
QSH00190	1	4.5	1.5 mV/V nom.	1%R.O.	2%R.O.	2%R.O.	3%R.O.		
QSH00497	2	8.9	2 mV/V nom.				1.5%R.O.		
QSH00540	5	22.2		17-4PH S.S.					
QSH00707	10	44.5							
QSH00706	25	111							
QSH00256	50	222							
QSH00213	100	445							

* SENSOR STRUCTURE CAN HANDLE HIGH OVERLOADS BUT THREADS MAY LIMIT OVERLOAD AT HIGHER CAPACITY.

SPECIFICATIONS:

- SAFE OVERLOAD* 1000%R.O., 200%R.O. Tension Only (50 & 100lb)
- ZERO BALANCE $\pm 3\%$ of R.O.
- EXCITATION 10 VDC MAX
- BRIDGE RESISTANCE 350 Ω nom.
- TEMP. SHIFT ZERO $\pm 0.02\%$ of R.O./ $^{\circ}$ F [0.04% of R.O./ $^{\circ}$ C]
- TEMP. SHIFT SPAN $\pm 0.04\%$ of LOAD/ $^{\circ}$ F [0.08% of LOAD/ $^{\circ}$ C]
- COMPENSATED TEMP. 60 to 160 $^{\circ}$ F [15 to 72 $^{\circ}$ C]
- OPERATING TEMP. 0 to 160 $^{\circ}$ F [-17 to 72 $^{\circ}$ C]
- WEIGHT 0.3 oz [9 g] (100g to 10 lb), 0.9 oz [26 g] (25 to 100 lb)
- CABLE: #29 AWG, 4 Conductor, Spiral Shielded Silicone Cable, 5 ft [1.5 m] Long
- CALIBRATION (STD) 5pt TENSION, SEE CHART FOR SHUNT CAL VALUE
- CALIBRATION (AVAILABLE) COMPRESSION
- CALIBRATION TEST EXCITATION 5 VDC



This drawing is submitted solely for the information and exclusive use of the original addressee. It is not to be divulged in whole or in part, by any firm or individual without written permission from FUTEK
CAGE CODE # 1X8M6

10 THOMAS
IRVINE, CA 92618 USA
1-949-465-0900

INTERNET:
<http://www.futek.com>