

## Terms and Conditions of Use

This drawing, including all information depicted herein (collectively, "Drawing"), is FUTEK's property and protected under applicable law, including copyright. FUTEK reserves all rights. The Drawing is provided solely for your information and exclusive use. **Except as expressly approved by FUTEK in writing, you may not reproduce or share this Drawing**, in whole or part, with any other firm or individual, or attempt to reverse engineer the Drawing or data contained therein. Any reproduction of this Drawing in whole or part must include this legend.

By accessing the Drawing, you agree that you have read, understand, and agree to abide by the stated Terms and Conditions of Use.

© 2023 FUTEK Advanced Sensor Technology, Inc.

# FUTEK MODEL QLA253

# Amplified Load Washer Load Cell

STOCK NUMBER: QSH00682

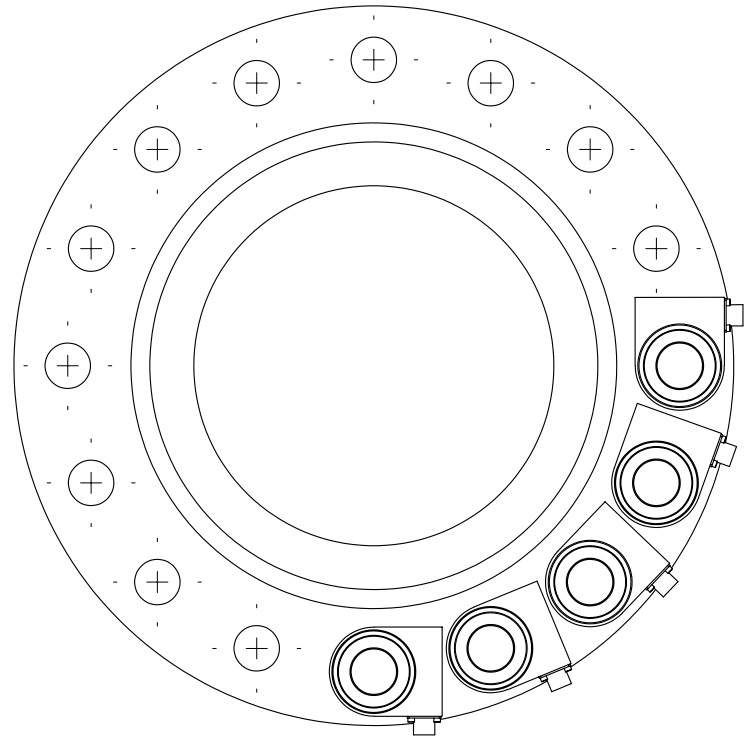
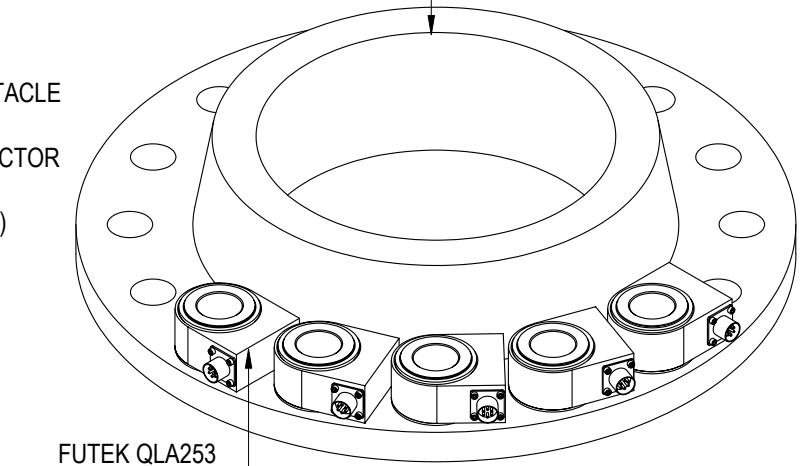
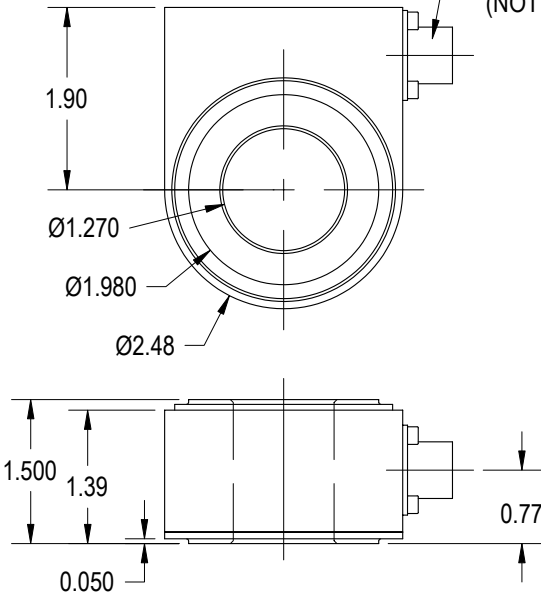
INCH (mm) | R.O.= Rated Output

WIRING CODE		
POWER	RETURN	VDC OUTPUT
RED PIN 'A'	BLACK PIN 'B'	GREEN PIN 'C'
TEDS DATA	TEDS GND	▲
ORANGE PIN E	BLUE PIN F	

B16.5 CLASS #600, 10" PIPE DIA  
WELD NECK FLANGE

BENDIX RECEPTACLE  
PT02A-10-6P  
MATING CONNECTOR  
PT06A-10-6S-SR  
(NOT INCLUDED)

FUTEK QLA253  
LOADCELL



## SPECIFICATIONS:

RATED OUTPUT	▲ 9 VDC nom
CAPACITY	100000 lbs
SAFE OVERLOAD	150% of R.O.
ZERO BALANCE	0.5 VDC nom
EXCITATION	12-24 VDC
NONLINEARITY	±3% of R.O.
HYSTERESIS	±3% of R.O.
NONREPEATABILITY	±0.5% of R.O.
TEMP. SHIFT ZERO	±0.02% of R.O./°F
TEMP. SHIFT SPAN	±0.02% of LOAD/°F
COMPENSATED TEMP.	60 to 160°F
OPERATING TEMP.	0 to 160°F
WEIGHT	APPROX 2.0 lb
MATERIAL	STAINLESS STEEL
CONNECTOR:	PT02A-10-6P

MATERIAL:

—

HEAT TREATMENT - FINISH:

—

REVISIONS: (Refer to dwg # revision sheet)

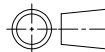
▲ 1-30-06

## OUTLINE DRAWING

STANDARD NOTES: (Unless Otherwise Specified)

- ALL DIMENSIONS ARE IN INCHES
- DRAWING INTERPRETATION DIMS. PER ASME-Y14.5M
- REMOVE BURRS AND BREAK SHARP EDGES .005 - .015
- THREADS PER HANDBOOK H-28
- DIMENSIONS ARE SHOWN AFTER PLATING

3rd ANGLE PROJ.



ANGLE:

±1/2°

CHAMFER:

±5°

TOLERANCE:

.X ±0.1

.XX ±0.01

.XXX ±0.005

This drawing, including all information depicted herein (collectively, "Drawing"), is FUTEK's property and protected under applicable law, including copyright. FUTEK reserves all rights. The Drawing is provided solely for your information and exclusive use. **Except as expressly approved by FUTEK in writing, you may not reproduce or share this Drawing**, in whole or part, with any other firm or individual or attempt to reverse engineer the Drawing or data contained therein. Any reproduction of this Drawing in whole or part must include this legend.

# FUTEK

CAGE: 1X8M6

MODEL: QLA253

DRAWN BY: R. WALKER

APPROVED BY: J. MOKHIBERY

DWG No.: FO1117

CHECKED BY: -

DATE: Jan. 16, 2005