

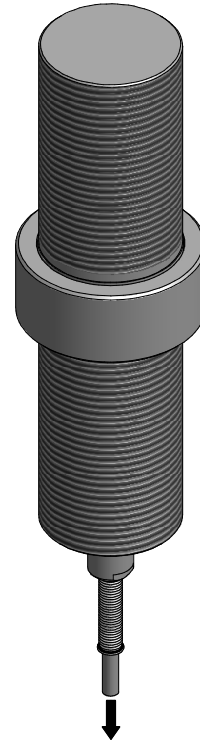
FUTEK MODEL LCM550-SP

THREADED ROD LOAD CELL WITH AXIAL CABLE EXIT

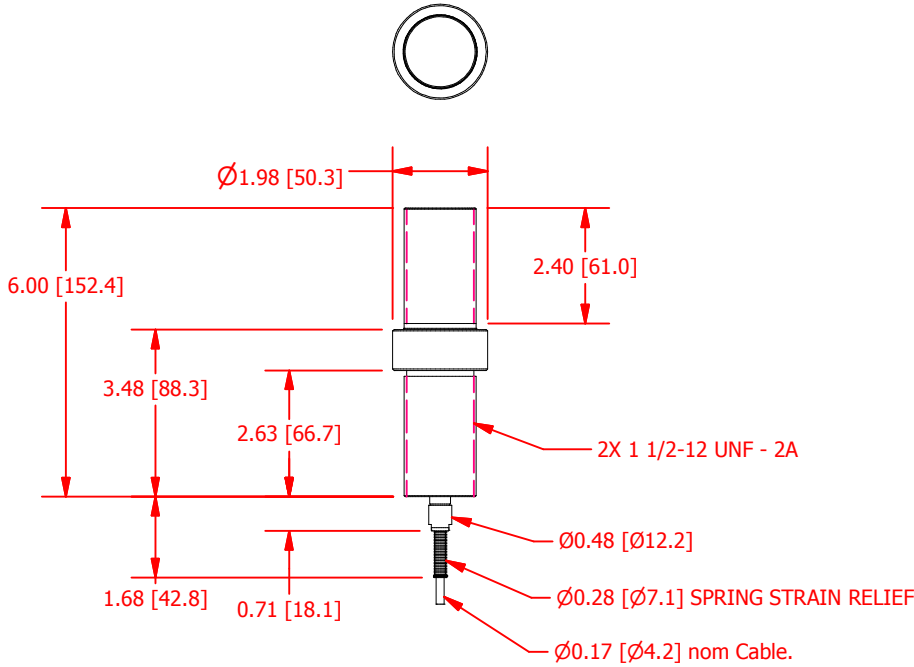
ITEM NUMBER: QSH01588

INCH [mm] | R.O.= Rated Output

WIRING CODE			
+Excitation	-Excitation	+Signal	-Signal
RED Pin A	BLACK Pin B	GREEN Pin C	WHITE Pin D
+SENSE	-SENSE	GROUND	
ORANGE Pin E	BLUE Pin F	FLOATING	



TO 8 PIN RECEPTACLE



SPECIFICATIONS:

RATED OUTPUT	1 mV/V nom.
CAPACITY	5000 lb [22.24kN]
SAFE OVERLOAD	300% of R.O.
ZERO BALANCE	±5% of R.O.
EXCITATION (VDC OR VAC)	18 MAX
BRIDGE RESISTANCE	350 Ω nom
NONLINEARITY	±0.5% of R.O.
HYSTERESIS	±0.5% of R.O.
NONREPEATABILITY	±0.1% of R.O.
TEMP. SHIFT ZERO	±0.005% of R.O./°F (±0.009 of R.O./°C)
TEMP. SHIFT SPAN	±0.005% of LOAD/°F (±0.009 of LOAD/°C)
COMPENSATED TEMP.	60 to 160 °F (16 to 71 °C)
OPERATING TEMP	-45 to 200 °F (-43 to 93 °C)
WEIGHT (approx)	3.1 lb
SENSOR IP RATING	IP67

A CABLE: 28 Awg 6 Conductor Braided Shielded Polyurethane Cable, Axial Cable Exit Out of the Bottom, 1 ft Long with 8 Pin Binder Male Plug 99 5171 00 08 (IP67 rated)

CUSTOMER APPROVAL- COMPANY:	<h1 style="color: green;">OUTLINE DRAWING</h1>	<p><i>This drawing is submitted solely for the information and exclusive use of the original addressee. It is not to be divulged in whole or in part, by any firm or individual without written permission from:</i></p> <p>FUTEK ADVANCED SENSOR TECHNOLOGY, INC. 10 THOMAS, IRVINE, CA 92618 USA Phone: (949) 465-0900 Fax: (949) 465-0905</p>		
CUSTOMER APPROVAL- NAME / DATE:				
REVISIONS: (Refer to dwg # revision sheet)	<p>STANDARD NOTES: (Unless Otherwise Specified)</p> <p>ALL DIMENSIONS ARE IN INCHES DRAWING INTERPRETATION DIMS. PER ASME-Y14.5M REMOVE BURRS AND BREAK SHARP EDGES .005 - .015 THREADS PER HANDBOOK H-28 DIMENSIONS ARE SHOWN AFTER PLATING</p> <p>3rd ANGLE PROJ.</p> <p>ANGLE: ± 1/2" CHAMFER: ± 5" TOLERANCE: .X ± 0.1" .XX ± 0.01" .XXX ± 0.005"</p>	<p>MODEL: LCM550-SP DWG No.: FO1313-A</p> <p>DRAWN BY: R. Walker CREATED DATE: 3/5/2012</p> <p>APPROVED BY: J. Vargas APPROVED DATE: 3/6/2012</p> <p>CHECKED BY: CAGE: 1X8M6 SHEET: 1 OF 1</p>		
<table border="1"> <tr> <td>A</td> <td>4/27/2012</td> </tr> </table>	A	4/27/2012		
A	4/27/2012			