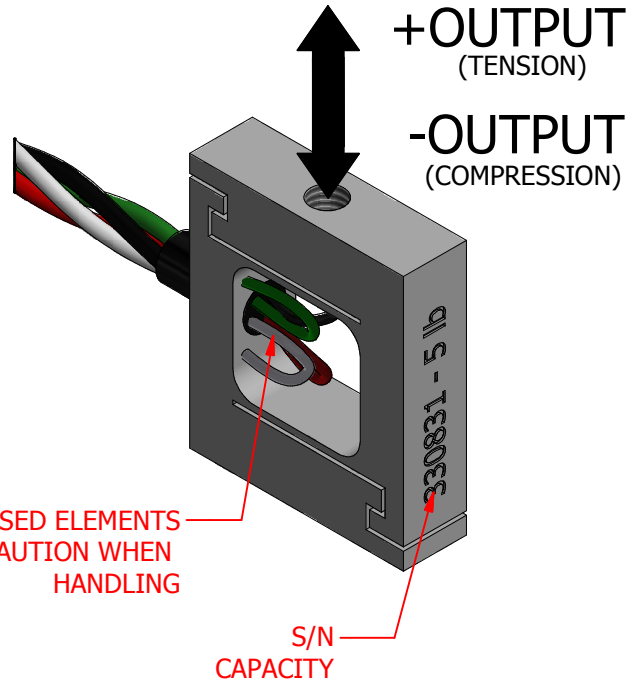
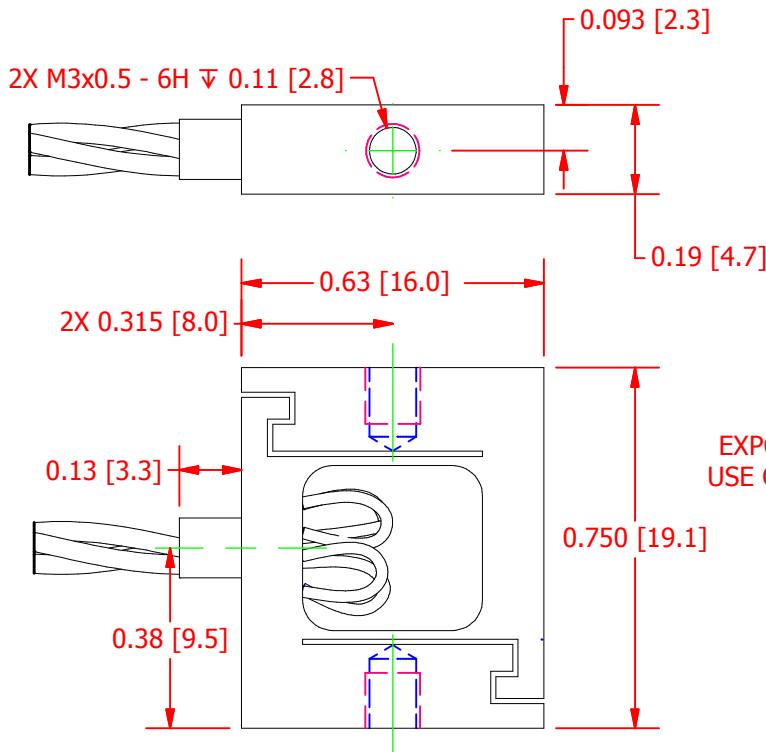


FUTEK MODEL LSB200 JR S-BEAM LOAD CELL, LEAD FREE VERSION

ITEM NUMBER: QSH01746

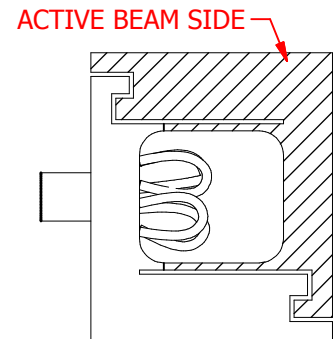


INCH [mm]		R.O. = Rated Output	
WIRING CODE			
+ Excitation	- Excitation	+ Signal	- Signal
RED	BLACK	GREEN	WHITE



SPECIFICATIONS:

RATED OUTPUT	1.5-2.25 mV/V nom.
CAPACITY	5 lb [22 N]
SAFE OVERLOAD	1000 % of R.O.
ZERO BALANCE	±3 % of R.O.
EXCITATION (VDC OR VAC)	10 MAX
BRIDGE RESISTANCE	350 Ω nom
NONLINEARITY	±0.1% of R.O.
HYSTERESIS	±0.1% of R.O.
NONREPEATABILITY	±0.05% of R.O.
TEMP. SHIFT ZERO	±0.01% of R.O./°F (±0.036 of R.O./°C)
TEMP. SHIFT SPAN	±0.02% of LOAD/°F (±0.036 of LOAD/°C)
COMPENSATED TEMP.	60 to 160°F (15 to 72 °C)
OPERATING TEMP	-60 to 200°F (-51 to 93 °C)
MATERIAL	ALUMINUM
CABLE: 26 Awg, 4 Conductor Spiral Cable, 8.0" Long	
RoHS Lead Free	YES
ISO 13485 COMPLIANCE	YES
IPC/WHMA-A-620 COMPLIANCE	YES (Cable Assembly)
CE COMPLIANCE	EN 55011:2009, EN 61326-1:2006



CUSTOMER APPROVAL- COMPANY:
CUSTOMER APPROVAL- NAME / DATE:

OUTLINE DRAWING

STANDARD NOTES: (Unless Otherwise Specified)
 ALL DIMENSIONS ARE IN INCHES
 DRAWING INTERPRETATION DIMS. PER ASME-Y14.5M
 REMOVE BURRS AND BREAK SHARP EDGES .005 - .015
 THREADS PER HANDBOOK H-28
 DIMENSIONS ARE SHOWN AFTER PLATING

ANGLE: ± 1/2°
 CHAMFER: ± 5°
 TOLERANCE:
 .X ± 0.1"
 .XX ± 0.01"
 .XXX ± 0.005"

3rd ANGLE PROJ.

This drawing is submitted solely for the information and exclusive use of the original addressee. It is not to be divulged in whole or in part, by any firm or individual without written permission from:

FUTEK
 ADVANCED SENSOR TECHNOLOGY, INC.
 10 THOMAS, IRVINE, CA 92618 USA
 Phone: (949) 465-0900
 Fax: (949) 465-0905

REVISIONS: (Refer to dwg # revision sheet)

MODEL: LSB200	DWG No.: FO1366
DRAWN BY: M. Lisiak	CREATED DATE: 5/8/2014
APPROVED BY: R. Walker	APPROVED DATE: 5/8/2014
CHECKED BY:	CAGE: 1X8M6 SHEET: 1 OF 1