

Terms and Conditions of Use

This drawing, including all information depicted herein (collectively, "Drawing"), is FUTEK's property and protected under applicable law, including copyright. FUTEK reserves all rights. The Drawing is provided solely for your information and exclusive use. **Except as expressly approved by FUTEK in writing, you may not reproduce or share this Drawing**, in whole or part, with any other firm or individual, or attempt to reverse engineer the Drawing or data contained therein. Any reproduction of this Drawing in whole or part must include this legend.

By accessing the Drawing, you agree that you have read, understand, and agree to abide by the stated Terms and Conditions of Use.

© 2023 FUTEK Advanced Sensor Technology, Inc.

FUTEK MODEL LLB250

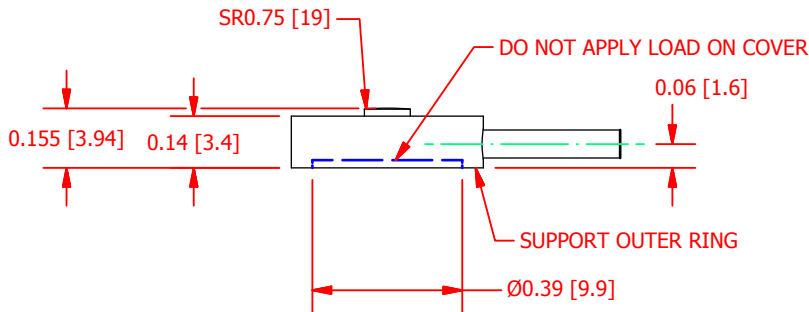
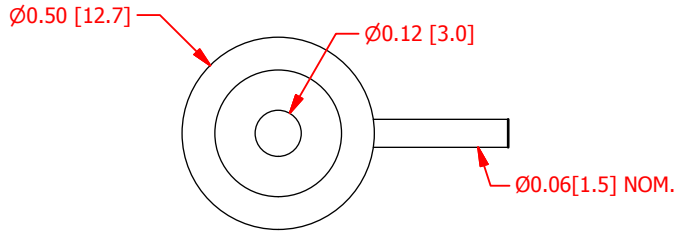
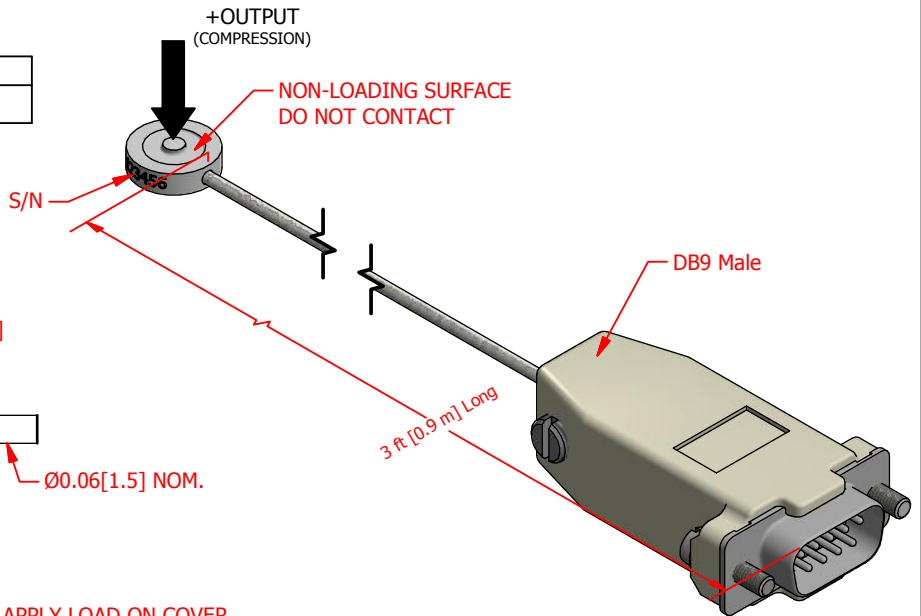
ITEM NUMBER: QSH01752

SUBMINIATURE LOAD BUTTON w/ TEDS (IEEE1451.4) RECOGNITION AND DB9 MALE

INCH [mm] | R.O.= Rated Output

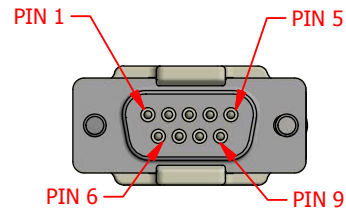
WIRING CODE (CC15)

+ Excitation	- Excitation	+ Signal	- Signal	
PIN 2	PIN 7	PIN 1	PIN 6	▲
Shield	TEDS DATA	TEDS GND	+ Sense	-Sense
FLOATING	PIN 5	PIN 9	PIN 4	PIN 8



SPECIFICATIONS

RATED OUTPUT	1.5mV/V Nom.
CAPACITY	100 lb [444 N]
SAFE OVERLOAD	150% of R.O.
ZERO BALANCE	±10% of R.O.
EXCITATION (VDC OR VAC)	7 MAX
BRIDGE RESISTANCE	350 Ω nom
NONLINEARITY	±0.5% of R.O. (BFSL) ±1% of R.O. (END POINT)
HYSTERESIS	±1% of R.O.
NONREPEATABILITY	±0.5% of R.O.
TEMP. SHIFT ZERO	±0.05% of R.O./°F (±0.09 of R.O./°C)
TEMP. SHIFT SPAN	±0.02% of LOAD/°F (±0.036 of LOAD/°C)
COMPENSATED TEMP.	60 to 90 °F (16 to 32 °C)
OPERATING TEMP	-40 to 185 °F (-40 to 85 °C)
WEIGHT (approx)	0.1 lb
MATERIAL	17-4 PH S.S
CABLE	Braided Shielded Cable, 3 ft Long
CONNECTOR	DB9 MALE



DB9 FRONT SIDE VIEW
SEE WIRING CODE TABLE FOR PIN OUTS

CUSTOMER APPROVAL- COMPANY:

CUSTOMER APPROVAL- NAME / DATE:

REVISIONS: (Refer to dwg # revision sheet)

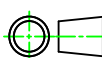
A	6/17/14

OUTLINE DRAWING

STANDARD NOTES: (Unless Otherwise Specified)

ALL DIMENSIONS ARE IN INCHES
DRAWING INTERPRETATION DIMS. PER ASME-Y14.5M
REMOVE BURRS AND BREAK SHARP EDGES .005 - .015
THREADS PER HANDBOOK H-28
DIMENSIONS ARE SHOWN AFTER PLATING

3rd ANGLE PROJ.



ANGLE:
± 1/2°

CHAMFER:
± 5°

TOLERANCE:
.X ± 0.1"
.XX ± 0.01"
.XXX ± 0.005"

This drawing, including all information depicted herein (collectively, "Drawing"), is FUTEK's property and protected under applicable law, including copyright. FUTEK reserves all rights. The Drawing is provided solely for your information and exclusive use. Except as expressly approved by FUTEK in writing, you may not reproduce or share this Drawing in whole or part with any other firm or individual, or attempt to reverse engineer the Drawing or data contained therein. Any reproduction of this Drawing in whole or part must include this legend.

FUTEK

MODEL: **LLB250**

DWG No.: **FO1371-A**

DRAWN BY: *E. Pano*

CREATED DATE: 6/12/2014

APPROVED BY: *R. Walker*

APPROVED DATE: 6/12/2014

CHECKED BY:

CAGE: 1X8M6 SHEET: 1 OF 1