

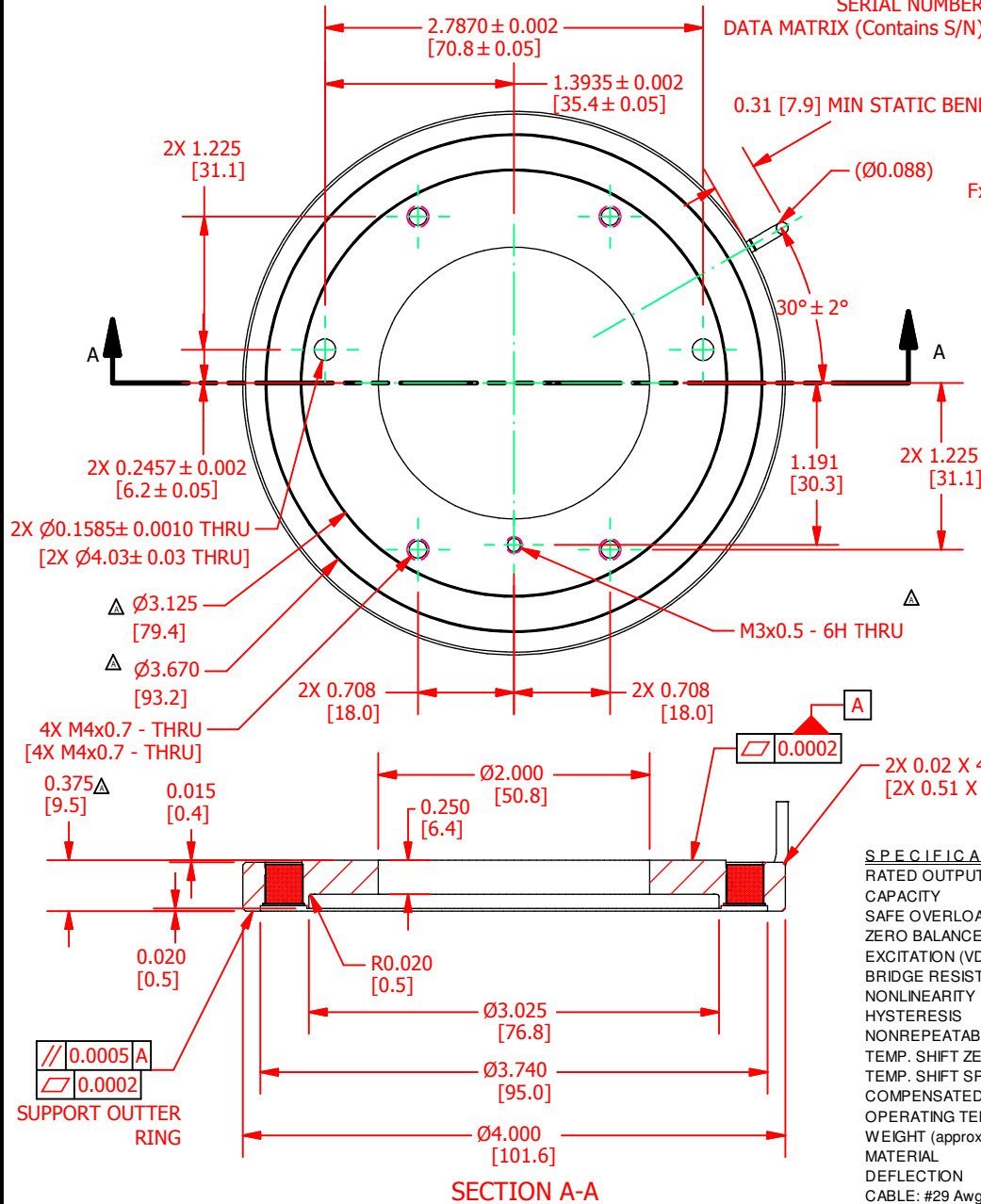
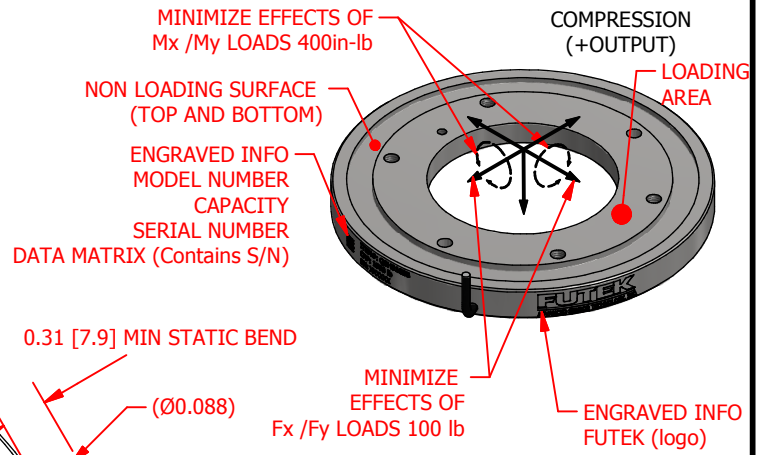
FUTEK MODEL QLA393

Custom Thru Hole Load Cell

ITEM NUMBER: QSH01835

DESIGNED TO MINIMIZE THE EFFECTS OF SHEAR (Fx and Fy) AND MOMENT (Mx and My) LOADS

INCH [mm] R.O. = Rated Output			
WIRING CODE (WC1)			
+ Excitation	- Excitation	+ Signal	- Signal
RED	BLACK	GREEN	WHITE
Shield			
FLOATING			



SPECIFICATIONS:

RATED OUTPUT	3 mV/V nom.
CAPACITY	1000 lb. [4440N]
SAFE OVERLOAD	150 % of R.O.
ZERO BALANCE	±5% of R.O.
EXCITATION (VDC OR VAC)	15 MAX
BRIDGE RESISTANCE	700 Ω nom.
NONLINEARITY	±1% of R.O.
HYSTERESIS	±1% of R.O.
NONREPEATABILITY	±0.5% of R.O.
TEMP. SHIFT ZERO	±0.01% of R.O./°F (±0.018 of R.O./°C)
TEMP. SHIFT SPAN	±0.02% of LOAD/°F (±0.036 of LOAD/°C)
COMPENSATED TEMP.	50 to 100 °F (10 to 38 °C)
OPERATING TEMP	-60 to 200 °F (-51 to 93 °C)
WEIGHT (approx)	0.75 lb [340.1 g]
MATERIAL	17-4 PH S.S.
DEFLECTION	0.003 [0.013] nom.
CABLE: #29 Awg 4 Conductor Spiral Shielded Silicone Cable, 10 ft [3.0 m] Long	
MAX Fx/Fy RESISTANCE	100 lb
MAX Mx/My RESISTANCE	400 in-lb



△	3 mV/V nom.
△	1000 lb. [4440N]
△	150 % of R.O.
△	±5% of R.O.
△	15 MAX
△	700 Ω nom.
△	±1% of R.O.
△	±1% of R.O.
△	±0.5% of R.O.
△	±0.01% of R.O./°F (±0.018 of R.O./°C)
△	±0.02% of LOAD/°F (±0.036 of LOAD/°C)
△	50 to 100 °F (10 to 38 °C)
△	-60 to 200 °F (-51 to 93 °C)
△	0.75 lb [340.1 g]
△	17-4 PH S.S.
△	0.003 [0.013] nom.
△	CABLE: #29 Awg 4 Conductor Spiral Shielded Silicone Cable, 10 ft [3.0 m] Long
△	100 lb
△	400 in-lb

CUSTOMER APPROVAL- COMPANY:

OUTLINE DRAWING

This drawing is submitted solely for the information and exclusive use of the original addressee. It is not to be divulged in whole or in part, by any firm or individual without written permission from:

FUTEK
ADVANCED SENSOR TECHNOLOGY, INC.
10 THOMAS, IRVINE, CA 92618 USA
Phone: (949) 465-0900
Fax: (949) 465-0905

CUSTOMER APPROVAL- NAME / DATE:

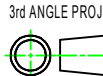
STANDARD NOTES: (Unless Otherwise Specified)

ALL DIMENSIONS ARE IN INCHES
DRAWING INTERPRETATION DIMS. PER ASME-Y14.5M
REMOVE BURRS AND BREAK SHARP EDGES .005 - .015
THREADS PER HANDBOOK H-28
DIMENSIONS ARE SHOWN AFTER PLATING

ANGLE:
± 1/2°

CHAMFER:
± 5°

TOLERANCE:
.X ± 0.1"
.XX ± 0.01"
.XXX ± 0.005"



REVISIONS: (Refer to dwg # revision sheet)

A	12/18/2015
B	6/22/2016

MODEL: **QLA393**

DRAWN BY: *E. Pano*

APPROVED BY: *R. Walker*

CHECKED BY:

DWG No.: **F01412-B**

CREATED DATE: 12/9/2015

APPROVED DATE: 12/14/2015

CAGE: 1X8M6 SHEET: 1 OF 1