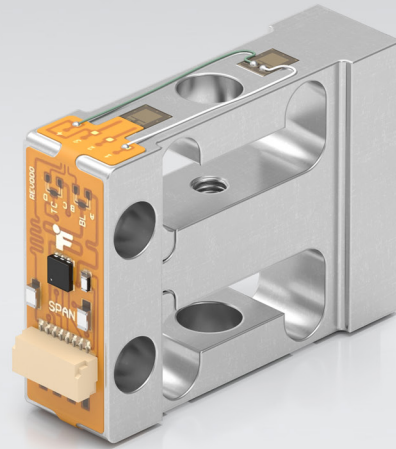


From LSM300 to LSM305: A seamless and rewarding upgrade



The compact LSM300 has a unique design that makes it one of the most accurate load cells in FUTEK's catalog. Now, our engineering mavens have taken it to the next level. Meet the LSM305, an upgrade with peerless features and capabilities that is easy to transition without disrupting existing setups.

KEY FEATURES

	LSM300	LSM305
Embedded OEM solution for high volume manufacturing	✓	✓
Exceptional nonlinearity and non-repeatability	✓	✓
Built-in 2.5X to 100X overload protection	✓	✓
Temperature compensated for ultimate accuracy	✓	✓
State-of-the-art ultra low creep performance	✓	✓
1000 ohm bridge resistance leads to very low power consumption for longer battery life/lower heat	✓	✓
Onboard IEEE1451.4 TEDS memory for auto recognition/calibration		✓
Simultaneous onboard PT-1000 RTD temperature output		✓
Integrated quick assembly/high reliability connector		✓
Integrated solder tabs for adding pre-made cable		✓

